



Brook facade as shown on the Vogue 18

SIMPLICITY COLLECTION

# The Domain 22

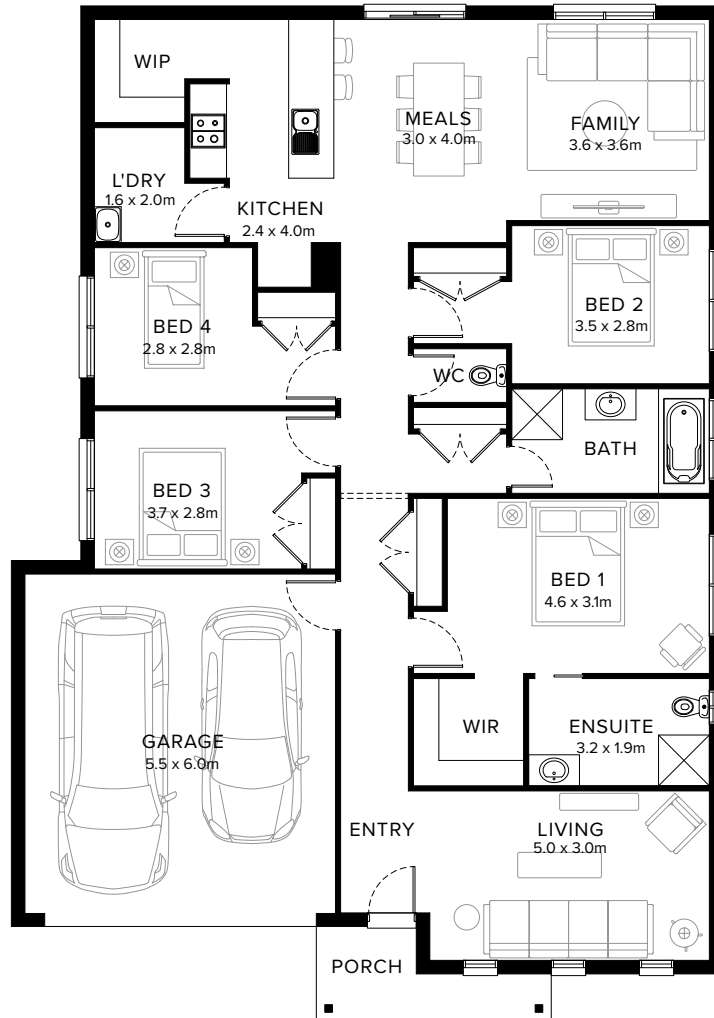
4  2  2  2 

## Smart Design Matters

The Domain proves that a compact block doesn't mean compromising on lifestyle. This impressive four bedroom home offers two distinctive living areas, a well-appointed kitchen with pantry, and a practical open-plan layout. The clever zoning separates the private main bedroom from the other bedrooms, while efficient design ensures no space is wasted.

**Fairhaven Homes**

# Standard Floorplan



4 2 2 2

## Specifications

Living	Garage	Porch*	House Total*	Facade
161.75m <sup>2</sup>	36.11m <sup>2</sup>	4.94m <sup>2</sup>	202.80m <sup>2</sup>	Valley
17.41sq	3.89sq	0.53sq	21.83sq	

# Specifications & Options

## Suitable Facades

Brook	Lagoon	River	Valley
Cove	Lake	Spring	

---

<b>House Width</b>	<b>House Depth</b>	<b>Block Width</b>	<b>Block Depth</b>
12.6m	17.9m	≥ 14m	≥ 25m

---

## Browse our Brochure Library

Explore our full range of  
Floorplans, Facades & Inclusions.

[View brochures](#)



## Fairhaven Homes