



Cove facade as shown on the Cosmo 166

SIMPLICITY COLLECTION

# The Cosmo

17

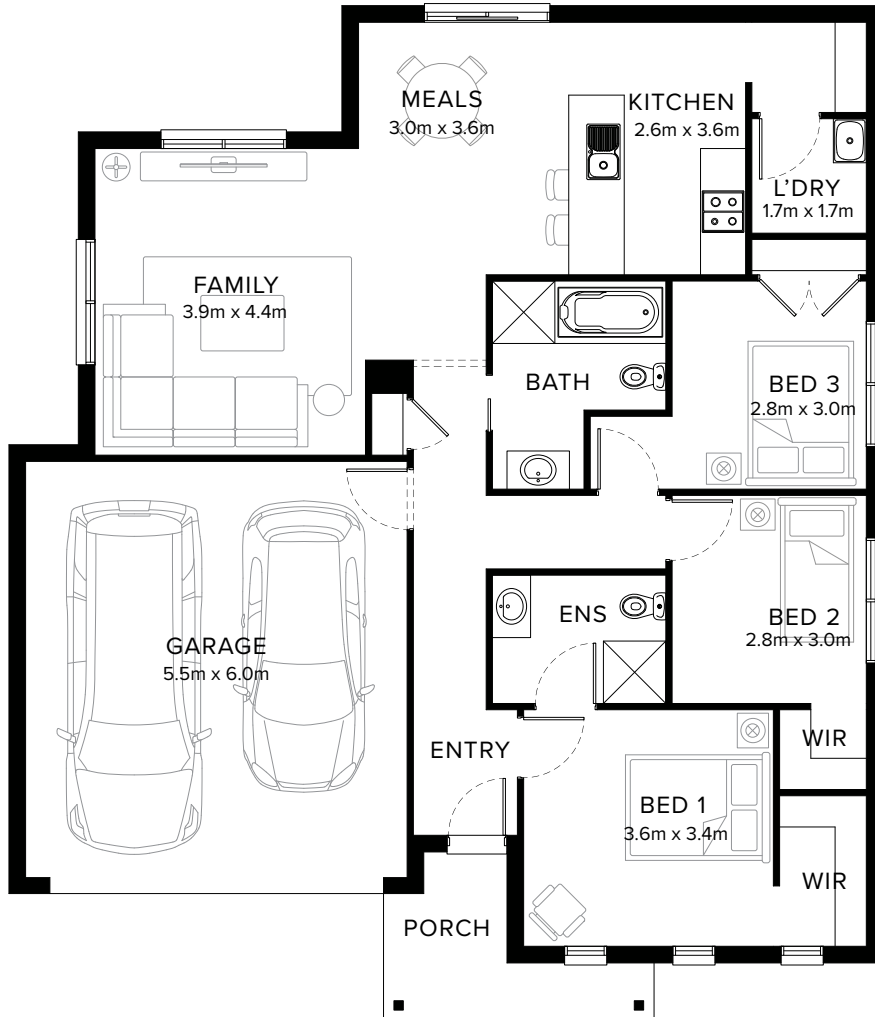
3  1  2  2 

## Cosy Sleek Hideaway

Compact yet cosy, the Cosmo will satisfy all your needs. The focal point of the home is the open plan kitchen, meals and family area that extends across the width of the Cosmo. The main bedroom is equipped with walk-in-robe and ensuite, while two additional bedrooms with built-in-robos serviced by a central bathroom offers convenience.

**Fairhaven Homes**

# Standard Floorplan



3 1 2 2

## Specifications

Living	Garage	Porch*	House Total*	Facade
116.59m <sup>2</sup>	36.14m <sup>2</sup>	5.74m <sup>2</sup>	158.47m <sup>2</sup>	Valley
12.55sq	3.89sq	0.62sq	17.06sq	

# Specifications & Options

## Suitable Facades

Brook	Lagoon	River	Valley
Cove	Lake	Spring	

---

<b>House Width</b>	<b>House Depth</b>	<b>Block Width</b>	<b>Block Depth</b>
12.6m	14.6m	≥ 14m	≥ 21m

---

## Browse our Brochure Library

Explore our full range of  
Floorplans, Facades & Inclusions.

[View brochures](#)



## Fairhaven Homes