

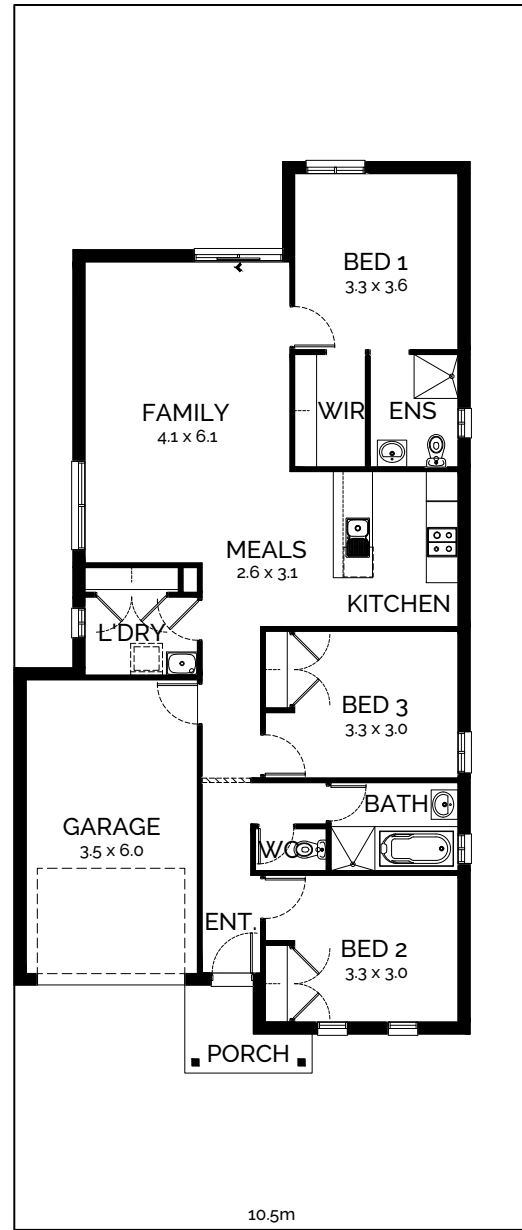


# Urban 155

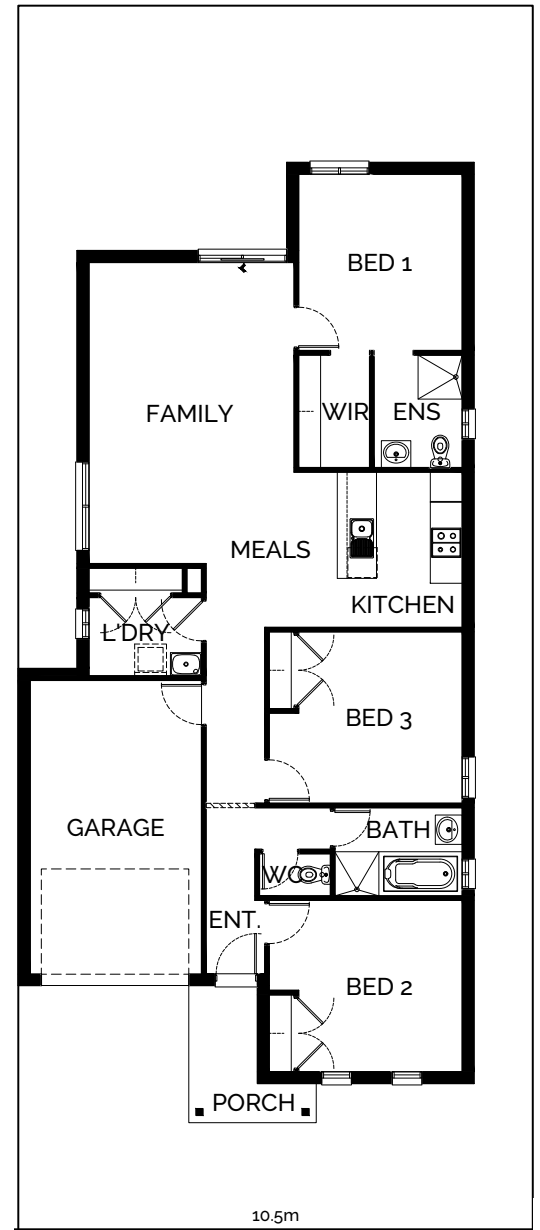
 3  2  1 15.5sq

- 
- ▶ BLOCK WIDTH 10.5m
  - ▶ BLOCK DEPTH 25m
  - ▶ HOUSE WIDTH 9.3m
  - ▶ HOUSE DEPTH 18.6m
- 

Suitable for blocks from 10.5 metres wide, Urban offers a compact floor plan with three bedrooms and open plan living. The rear Master Bedroom has a large Walk-In Robe and Ensuite; two further bedrooms at the front of the home share a Bathroom with shower and bath. A spacious Kitchen, Meals and Family area opens to the backyard.



Standard Design



Extended Bedroom 1 Option