



Pier facade as shown on the Clovelly 22

BRIDGEWATER COLLECTION

The Shoal

26

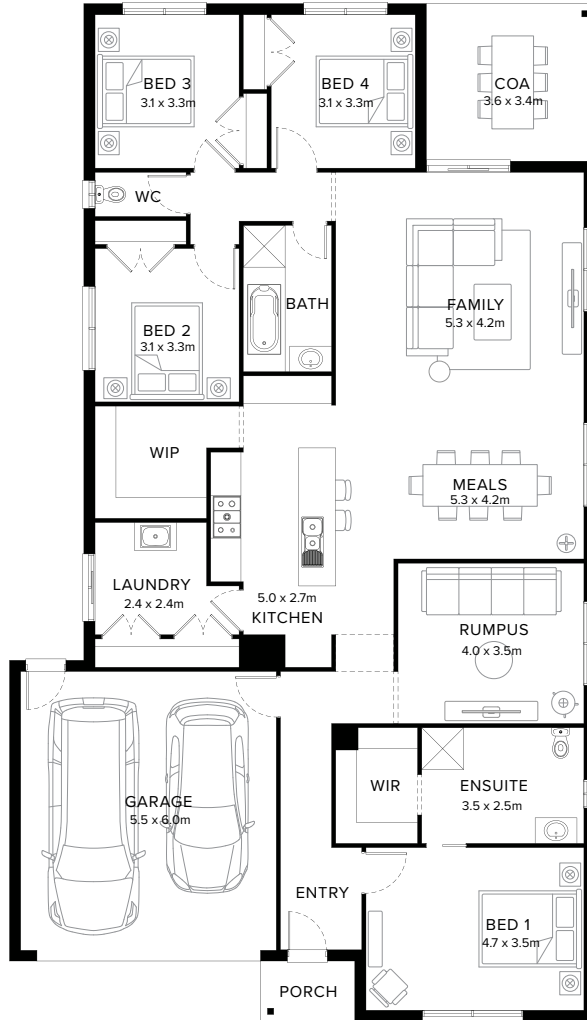
4  2  2  2  1 

Captivating & Adored

The Shoal ticks all the boxes if you're looking for a design that combines style and functionality. Featuring four bedrooms, two bathrooms plus an abundance of space for a large family. The Shoal is a design that is both enchanting and comfortable.

Fairhaven Homes

Standard Floorplan



- 4 2 2 2 1

Specifications

Living	Garage	Porch*	C.O.A	House Total*	Facade
195.22m ²	36.14m ²	2.64m ²	12.31m ²	246.31m ²	Harbour
21.01sq	3.89sq	0.28sq	1.32sq	26.51sq	

Specifications & Options

Suitable Facades

Botany	Harbour	Peak	Ravine	Sierra	Tidal
Canyon	Haven	Pier	Regal	Sovereign	Tower
Dune	Loch	Providence	Resort	Surf Coast	
Eco	Matrix	Range	Scandi		

House Width	House Depth	Block Width	Block Depth
12.6m	21.9m	≥ 14m	≥ 30m

Available Options

- ★ Extended shower, vanity and enclosed wc to ensuite
- ★ Swap bedroom 1 and living with extended shower and vanity to ensuite
- ★ Living in lieu of covered outdoor area with study
- ★ Raked ceiling
- Extended cabinetry to laundry
- Cabinetry to walk-in-pantry in lieu of shelving
- Alternate bathroom layout
- Extended shower and vanity to ensuite
- Walk-in-linen
- Extended laundry with linen cupboard

More options available


Speak to a New Home Consultant

★ Popular Option

Browse our Brochure Library

Explore our full range of Floorplans, Facades & Inclusions.

[View brochures](#)



Fairhaven Homes