



Providence facade as shown on the Shoal 265

BRIDGEWATER COLLECTION

The Shoal

22

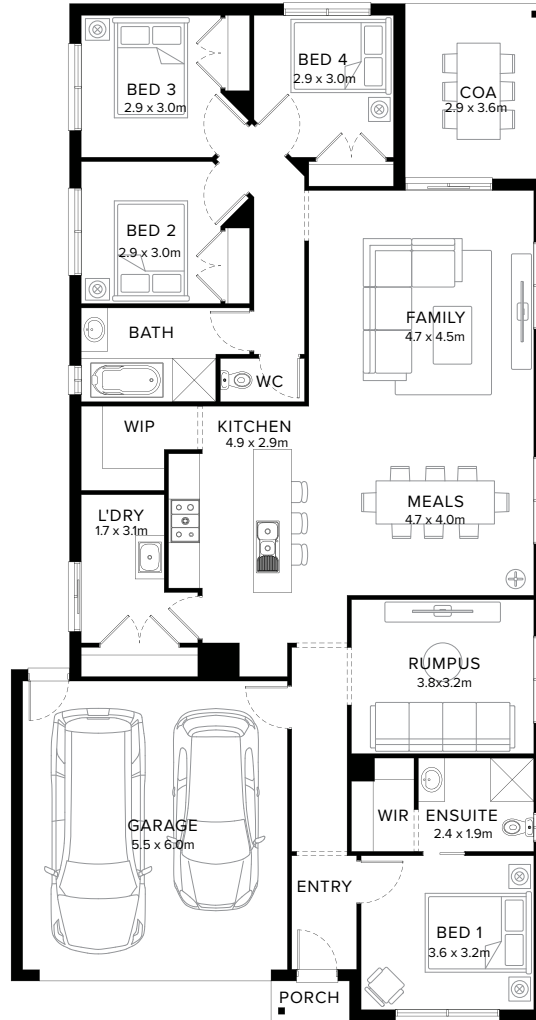
4  2  2  2  1 

Captivating & Adored

The Shoal ticks all the boxes if you're looking for a design that combines style and functionality. Featuring four bedrooms, two bathrooms plus an abundance of space for a large family. The Shoal is a design that is both enchanting and comfortable.

Fairhaven Homes

Standard Floorplan



4 2 2 2 1

Specifications

Living	Garage	Porch*	C.O.A	House Total*	Facade
165.28m ²	36.05m ²	1.37m ²	10.61m ²	213.31m ²	Harbour
17.79sq	3.88sq	0.15sq	1.14sq	22.96sq	

Specifications & Options

Suitable Facades

Botany	Harbour	Peak	Ravine	Sierra	Tidal
Canyon	Haven	Pier	Regal	Sovereign	Tower
Dune	Loch	Providence	Resort	Surf Coast	
Eco	Matrix	Range	Scandi		

House Width	House Depth	Block Width	Block Depth
11.1m	21.1m	≥ 12.5m	≥ 29m

Available Options

- ★ Alternate laundry layout
- ★ Swap bedroom 1 and rumpus
- ★ Alternate walk-in-robe and ensuite layout with extended shower and vanity
- ★ Raked ceiling
- ★ Alternate laundry, walk-in-pantry layout
- ★ Swap bedroom 2 and bathroom
- Cabinetry to walk-in-pantry in lieu of shelving with additional cabinetry to kitchen
- Study in lieu of rumpus
- Study in lieu of rumpus with extended shower and vanity to ensuite
- Study in lieu of rumpus with increased meals, family
- Alternate walk-in-robe and ensuite layout

More options available


Speak to a New Home Consultant

★ Popular Option

Browse our Brochure Library

Explore our full range of Floorplans, Facades & Inclusions.

[View brochures](#)



Fairhaven Homes