



Providence facade as shown on the Shoal 265

BRIDGEWATER COLLECTION

# The Shoal

22

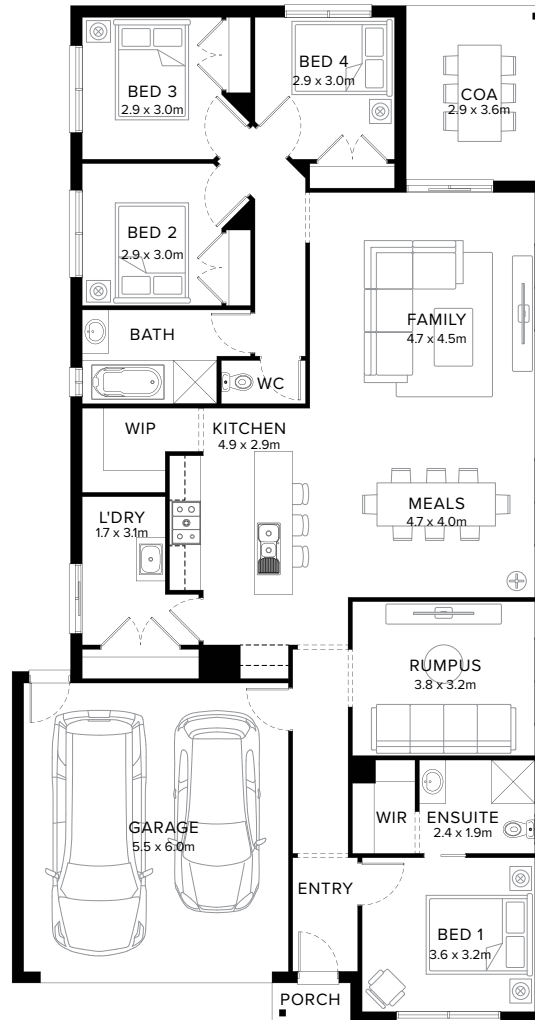
4  2  2  2  1 

## Captivating & Adored

The Shoal ticks all the boxes if you're looking for a design that combines style and functionality. Featuring four bedrooms, two bathrooms plus an abundance of space for a large family. The Shoal is a design that is both enchanting and comfortable.

**Fairhaven Homes**

# Standard Floorplan



4  2  2  2  1 

## Specifications

Living	Garage	Porch*	C.O.A	House Total*	Facade
165.28m <sup>2</sup>	36.05m <sup>2</sup>	1.37m <sup>2</sup>	10.61m <sup>2</sup>	213.31m <sup>2</sup>	Harbour
17.79sq	3.88sq	0.15sq	1.14sq	22.96sq	

# Specifications & Options

## Suitable Facades

Botany	Harbour	Peak	Ravine	Sierra	Tidal
Canyon	Haven	Pier	Regal	Sovereign	Tower
Dune	Loch	Providence	Resort	Surf Coast	
Eco	Matrix	Range	Scandi		

<b>House Width</b>	<b>House Depth</b>	<b>Block Width</b>	<b>Block Depth</b>
11.1m	21.1m	≥ 12.5m	≥ 29m

## Available Options

- ★ Alternate laundry layout
- ★ Swap bedroom 1 and rumpus
- ★ Alternate walk-in-robe and ensuite layout with extended shower and vanity
- ★ Raked ceiling
- ★ Alternate laundry, walk-in-pantry layout
- ★ Swap bedroom 2 and bathroom
- Cabinetry to walk-in-pantry in lieu of shelving with additional cabinetry to kitchen
- Study in lieu of rumpus
- Study in lieu of rumpus with extended shower and vanity to ensuite
- Study in lieu of rumpus with increased meals, family
- Alternate walk-in-robe and ensuite layout

More options available


Speak to a New Home Consultant

★ Popular Option

**Browse our Brochure Library**

Explore our full range of Floorplans, Facades & Inclusions.

[View brochures](#)



## Fairhaven Homes