



Ravine facade as shown on the Shoal 265

BRIDGEWATER COLLECTION

The Shoal

20

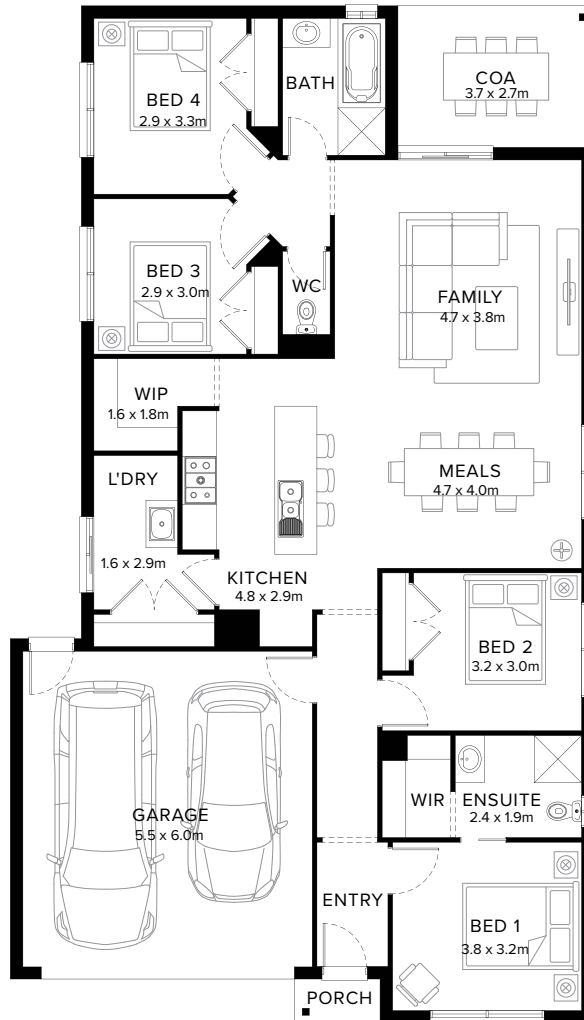
4  1  2  2  1 

Captivating & Adored

The Shoal ticks all the boxes if you're looking for a design that combines style and functionality. Featuring four bedrooms, two bathrooms plus an abundance of space for a large family. The Shoal is a design that is both enchanting and comfortable.

Fairhaven Homes

Standard Floorplan



Specifications

Living	Garage	Porch*	C.O.A	House Total*	Facade
146.41m ²	36.08m ²	1.37m ²	10.03m ²	193.90m ²	Harbour
15.76sq	3.88sq	0.15sq	1.08sq	20.87sq	

Specifications & Options

Suitable Facades

Botany	Eco	Matrix	Providence	Resort	Surf Coast
Canyon	Harbour	Peak	Range	Sierra	Tower
Dune	Haven	Pier	Ravine		

House Width	House Depth	Block Width	Block Depth
11.1m	19.3m	≥ 12.5m	≥ 27m

Available Options

- ★ Extended cabinetry to laundry with walk-in-linen
- ★ Swap living and bedroom 1 layout
- ★ Raked ceiling
- Cabinetry to walk-in-pantry in lieu of shelving
- Additional cabinetry to kitchen
- cabinetry to walk-in-pantry in lieu of shelving with walk-in-linen
- 3 bedroom in lieu of 4, with study
- 3 bedroom in lieu of 4, with study and extended shower and vanity to ensuite


[More options available](#) [Speak to a New Home Consultant](#)

★ Popular Option

Browse our Brochure Library

Explore our full range of Floorplans, Facades & Inclusions.

[View brochures](#)



Fairhaven Homes