



Ravine facade as shown on the Shoal 265

BRIDGEWATER COLLECTION

The Shoal

20

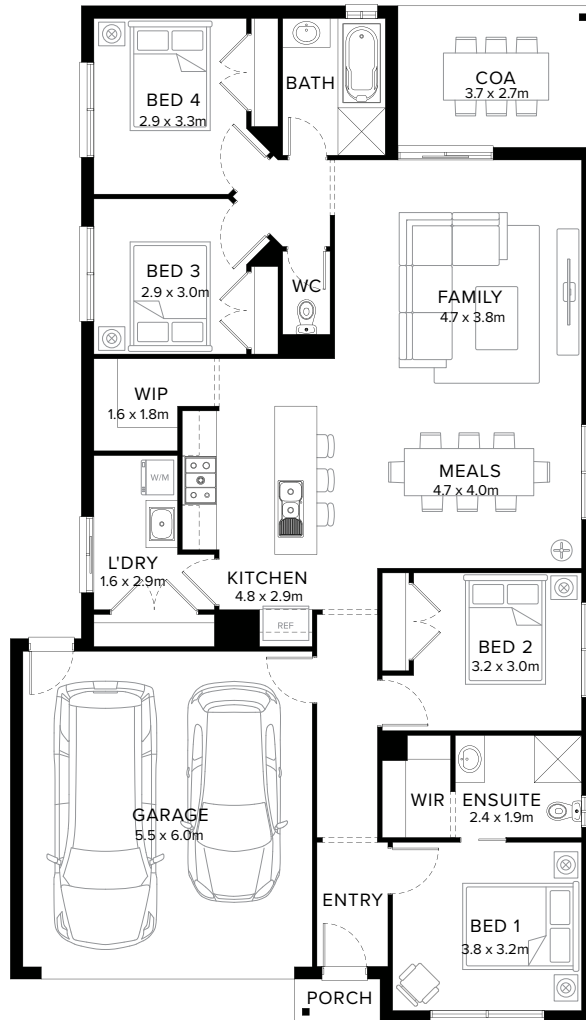
4  1  2  2  1 

Captivating & Adored

The Shoal ticks all the boxes if you're looking for a design that combines style and functionality. Featuring four bedrooms, two bathrooms plus an abundance of space for a large family. The Shoal is a design that is both enchanting and comfortable.

Fairhaven Homes

Standard Floorplan



Specifications

Living	Garage	Porch*	C.O.A	House Total*	Facade
146.41m ²	36.08m ²	1.37m ²	10.03m ²	193.90m ²	Harbour
15.76sq	3.88sq	0.15sq	1.08sq	20.87sq	

Specifications & Options

Suitable Facades

Botany	Harbour	Peak	Ravine	Sierra	Tidal
Canyon	Haven	Pier	Regal	Sovereign	Tower
Dune	Loch	Providence	Resort	Surf Coast	
Eco	Matrix	Range	Scandi		

House Width	House Depth	Block Width	Block Depth
11.1m	19.3m	≥ 12.5m	≥ 27m

Available Options

- ★ Extended cabinetry to laundry with walk-in-linen
- ★ Swap living and bedroom 1 layout
- ★ Raked ceiling
- Cabinetry to walk-in-pantry in lieu of shelving
- Additional cabinetry to kitchen
- cabinetry to walk-in-pantry in lieu of shelving with walk-in-linen
- 3 bedroom in lieu of 4, with study
- 3 bedroom in lieu of 4, with study and extended shower and vanity to ensuite

More options available


Speak to a New Home Consultant

★ Popular Option

Browse our Brochure Library

Explore our full range of Floorplans, Facades & Inclusions.

[View brochures](#)



Fairhaven Homes