



BRIDGEWATER COLLECTION

# The Newport

41

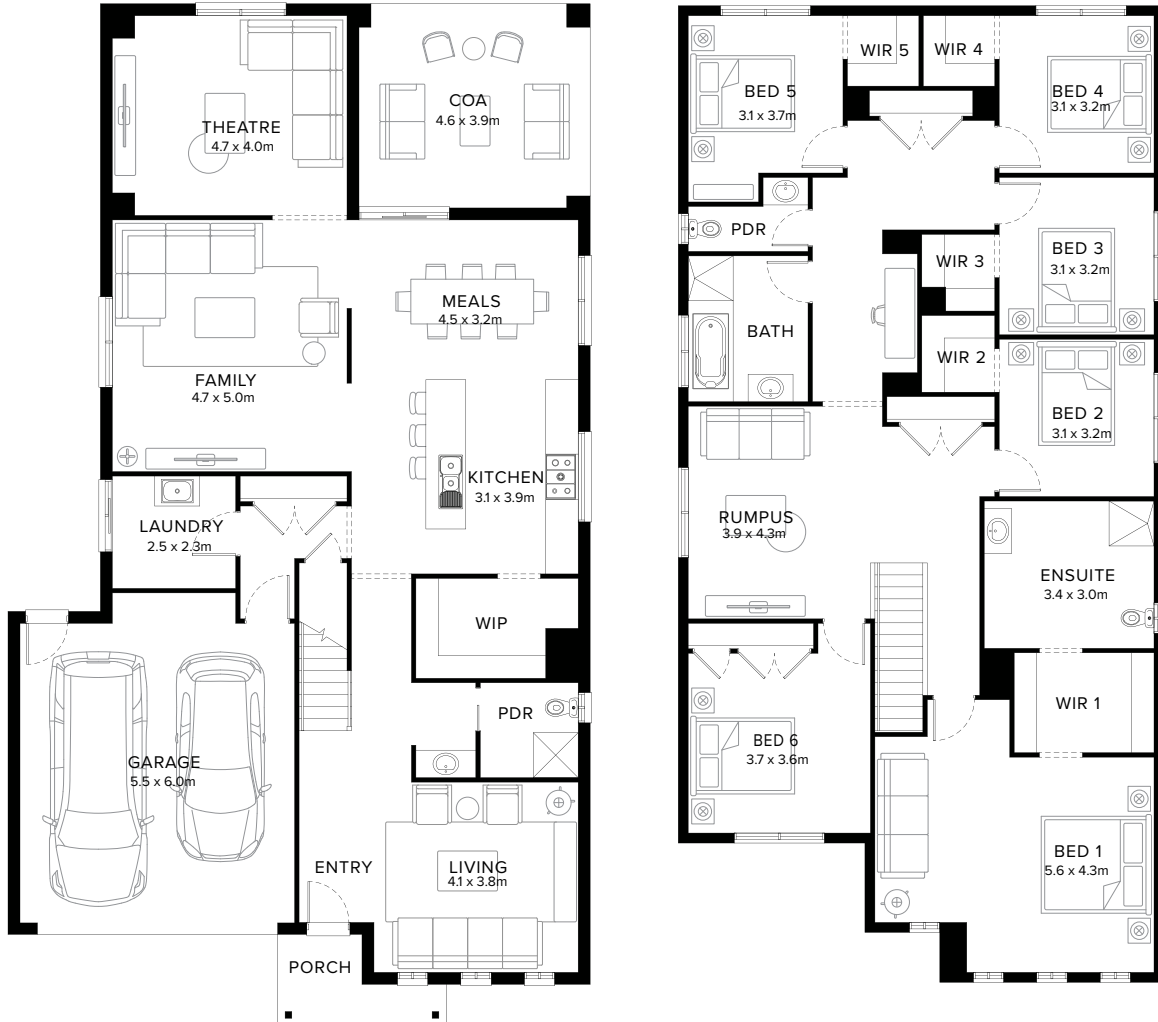
6  4  3  1  2  1 

## Contemporary Family Plan

The Newport is a flowing layout that appears modern and is suitable for most needs. Instantly as you enter, you are greeted with a bright and light space. All bedrooms are located upstairs, downstairs features a generous kitchen, meals and family space with optional covered outdoor area.

**Fairhaven Homes**

# Standard Floorplan



6 4 3 1 2 1

## Specifications

Ground Floor	First Floor	Garage	Porch*	C.O.A	House Total*	Facade
142.98m <sup>2</sup>	178.38m <sup>2</sup>	37.71m <sup>2</sup>	4.50m <sup>2</sup>	18.71m <sup>2</sup>	382.28m <sup>2</sup>	Parkway
15.39sq	19.20sq	4.06sq	0.48sq	2.01sq	41.15sq	

# Specifications & Options

## Suitable Facades

Apex	Greyson	Latrobe	Parkway	Ridge	Summit
Ashmond	Holbrook	Loddon	Patterson	Spire	Timbertop
Edge	Lancaster	Meridian	Pinnacle		

<b>House Width</b>	<b>House Depth</b>	<b>Block Width</b>	<b>Block Depth</b>
11.6m	20.5m	≥ 14m	≥ 28m

## Available Options

- ★ Mirrored rear
- ★ Extended shelving to walk-in-robe with extended shower, vanity and enclosed wc to ensuite
- ★ 5 bedroom in lieu of 6 with powder room and reconfigured alternate bathroom layout
- ★ 5 bedroom with ensuites and walk-in-robos
- ★ Bedroom 7 with ensuite in lieu of living
- Removed wall to family
- Columns in lieu of wall to family
- Extended cabinetry to laundry
- Increased laundry with linen cupboards
- Additional walk-in-robe to bedroom 1
- 5 bedroom with ensuites and walk-in-robos


[More options available](#) [Speak to a New Home Consultant](#)

★ Popular Option

**Browse our Brochure Library**

Explore our full range of Floorplans, Facades & Inclusions.

[View brochures](#)



## Fairhaven Homes