



Lancaster facade as shown on the Newport 36

BRIDGEWATER COLLECTION

The Newport

36

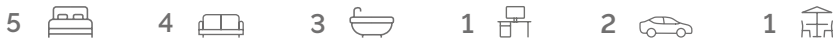
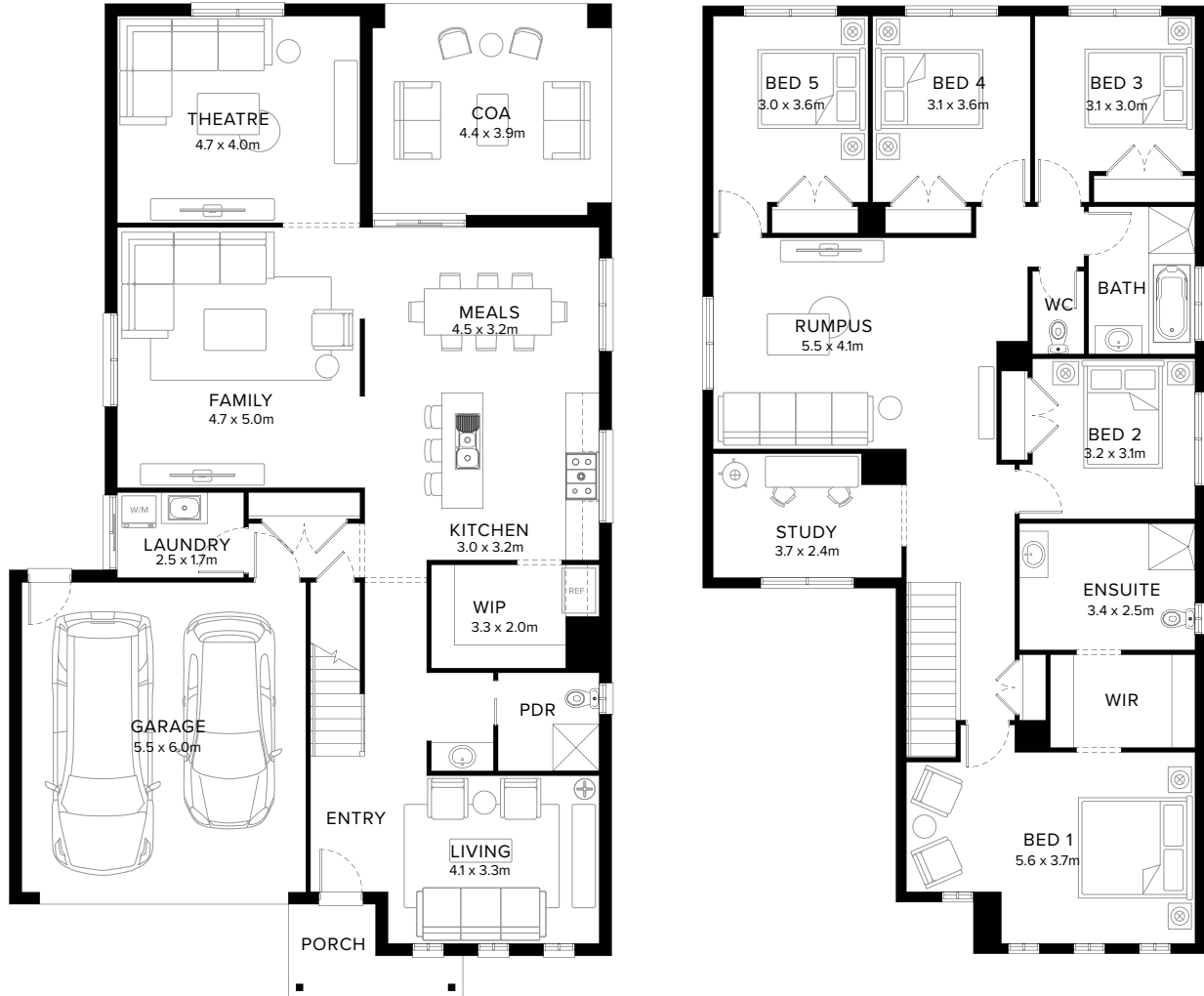
5  4  3  1  2  1 

Contemporary Family Plan

The Newport is a flowing layout that appears modern and is suitable for most needs. Instantly as you enter, you are greeted with a bright and light space. All bedrooms are located upstairs, downstairs features a generous kitchen, meals and family space with optional covered outdoor area.

Fairhaven Homes

Standard Floorplan



Specifications

Ground Floor	First Floor	Garage	Porch*	C.O.A	House Total*	Facade
132.60m ²	150.57m ²	36.20m ²	4.50m ²	18.70m ²	342.56m ²	Parkway
14.27sq	16.21sq	3.90sq	0.48sq	2.01sq	36.87sq	

Specifications & Options

Suitable Facades

Apex	Greyson	Latrobe	Parkway	Ridge	Summit
Ashmond	Holbrook	Loddon	Patterson	Spire	Timbertop
Edge	Lancaster	Meridian	Pinnacle		

House Width	House Depth	Block Width	Block Depth
11.6m	19.3m	≥ 14m	≥ 27m

Available Options

- ★ Extended shower, vanity and enclosed wc to ensuite
- ★ Increased ensuite with extended shower, vanity and enclosed wc to bedroom 1
- ★ Build over garage with bedroom 6 and ensuite with extended vanity
- ★ 4 bedrooms in lieu of 5 with walk-in-robos and relocated rumpus
- Removed wall to family
- Extended cabinetry to laundry
- Cabinetry to walk-in-pantry in lieu of shelving
- Extended shelving to walk-in-robe
- Powder room in lieu of wc
- Reconfigured wc and bathroom layout
- Bedroom 6 in lieu of living with ensuite in lieu of powder room


[More options available](#) [Speak to a New Home Consultant](#)

★ Popular Option

Browse our Brochure Library

Explore our full range of Floorplans, Facades & Inclusions.

[View brochures](#)



Fairhaven Homes