



Pinnacle facade as shown on the Newport 413

BRIDGEWATER COLLECTION

The Newport

28

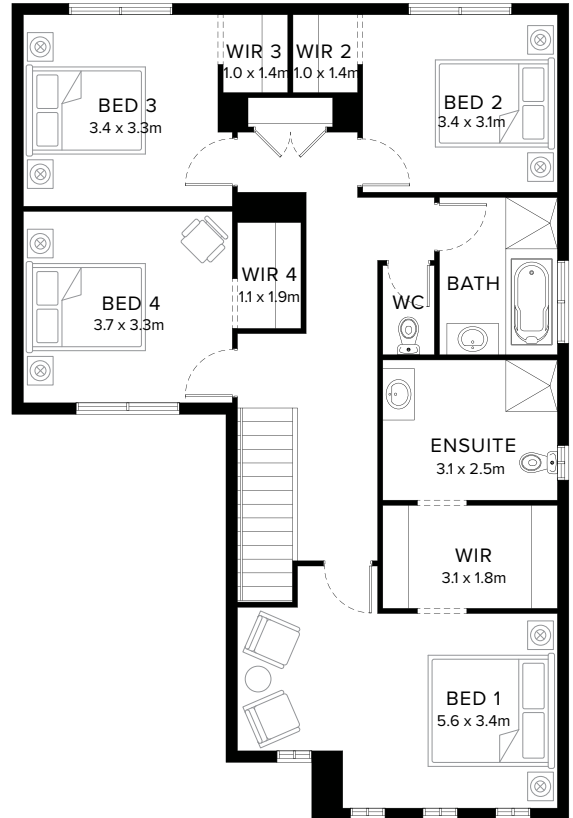
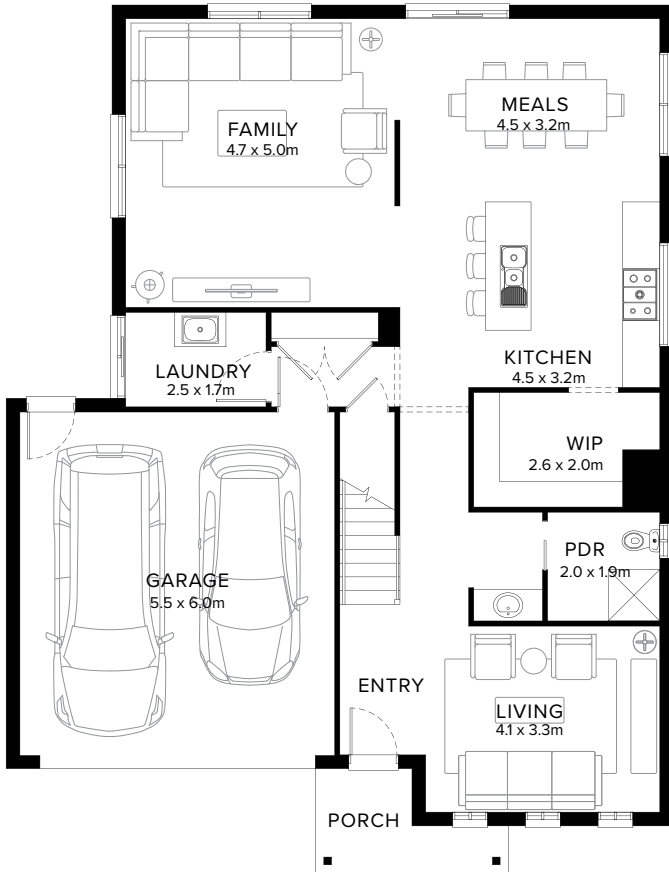
4  2  3  2 

Contemporary Family Plan

The Newport is a flowing layout that appears modern and is suitable for most needs. Instantly as you enter, you are greeted with a bright and light space. All bedrooms are located upstairs, downstairs features a generous kitchen, meals and family space with optional covered outdoor area.

Fairhaven Homes

Standard Floorplan



4 2 3 2

Specifications

| Ground Floor | First Floor | Garage | Porch* | House Total* | Facade |
|----------------------|----------------------|---------------------|--------------------|----------------------|---------|
| 111.20m ² | 110.77m ² | 36.20m ² | 4.50m ² | 262.67m ² | Parkway |
| 11.97sq | 11.92sq | 3.90sq | 0.48sq | 28.27sq | |

Specifications & Options

Suitable Facades

| | | | | | |
|---------|-----------|----------|-----------|-------|-----------|
| Apex | Greyson | Latrobe | Parkway | Ridge | Summit |
| Ashmond | Holbrook | Loddon | Patterson | Spire | Timbertop |
| Edge | Lancaster | Meridian | Pinnacle | | |

| | | | |
|--------------------|--------------------|--------------------|--------------------|
| House Width | House Depth | Block Width | Block Depth |
| 11.6m | 15.2m | ≥ 14m | ≥ 22m |

Available Options

- ★ Mirrored rear with removed wall to family
- ★ Mirrored rear with extended cabinetry to kitchen
- ★ Extended shower, vanity and enclosed wc to ensuite
- ★ Build over garage with bedroom 4, added rumpus
- ★ Covered outdoor area
- ★ Theatre and covered outdoor area
- Extended cabinetry to laundry
- Removed wall to family
- Mirrored rear
- Extended shelving to walk-in-robe
- Bedroom 5 in lieu of living with ensuite in lieu of powder room
- Extended shower, vanity and enclosed wc to ensuite

More options available


Speak to a New Home Consultant

★ Popular Option

Browse our Brochure Library

Explore our full range of Floorplans, Facades & Inclusions.

[View brochures](#)



Fairhaven Homes