



Latrobe facade as shown on the Newport 361

BRIDGEWATER COLLECTION

# The Newport 24

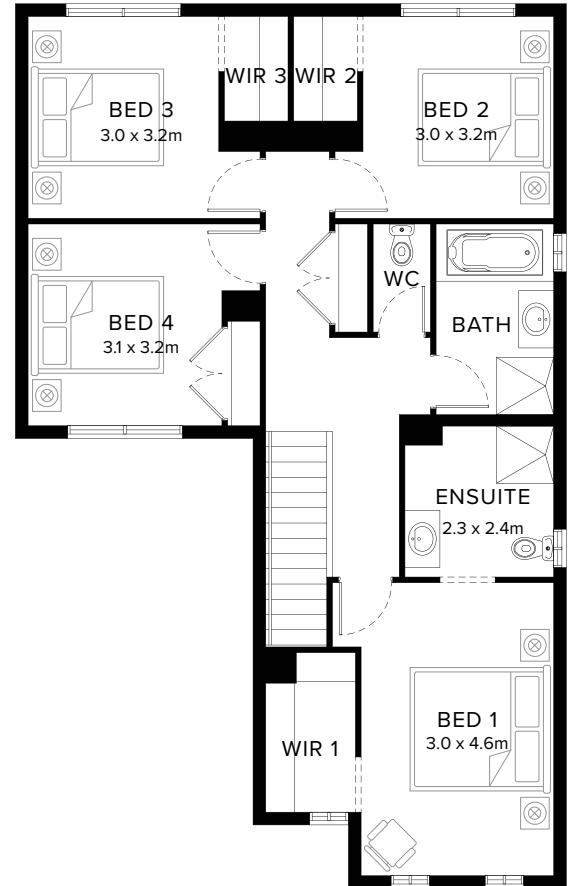
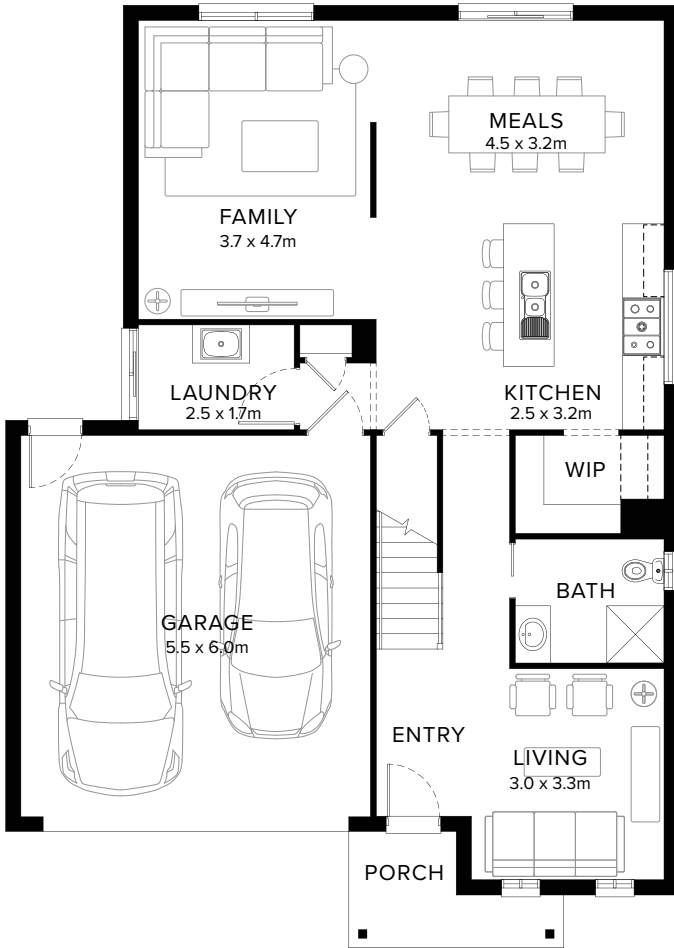
4  2  3  2 

## Contemporary Family Plan

The Newport is a flowing layout that appears modern and is suitable for most needs. Instantly as you enter, you are greeted with a bright and light space. All bedrooms are located upstairs, downstairs features a generous kitchen, meals and family space with optional covered outdoor area.

**Fairhaven Homes**

# Standard Floorplan



4 2 3 2

## Specifications

| Ground Floor        | First Floor         | Garage              | Porch*             | House Total*         | Facade  |
|---------------------|---------------------|---------------------|--------------------|----------------------|---------|
| 93.03m <sup>2</sup> | 92.71m <sup>2</sup> | 36.20m <sup>2</sup> | 4.50m <sup>2</sup> | 226.43m <sup>2</sup> | Parkway |
| 10.01sq             | 9.98sq              | 3.90sq              | 0.48sq             | 24.37sq              |         |

# Specifications & Options

## Suitable Facades

|         |           |          |           |       |           |
|---------|-----------|----------|-----------|-------|-----------|
| Apex    | Greyson   | Latrobe  | Parkway   | Ridge | Summit    |
| Ashmond | Holbrook  | Loddon   | Patterson | Spire | Timbertop |
| Edge    | Lancaster | Meridian | Pinnacle  |       |           |

|                    |                    |                    |                    |
|--------------------|--------------------|--------------------|--------------------|
| <b>House Width</b> | <b>House Depth</b> | <b>Block Width</b> | <b>Block Depth</b> |
| 10.6m              | 14.8m              | ≥ 12.5m            | ≥ 22m              |

## Available Options

- ★ Columns in lieu of wall to family
- ★ Mirrored rear with removed wall to family
- ★ Covered outdoor area
- ★ Extended shower and vanity to ensuite
- ★ Theatre and covered outdoor area
- ★ Build over garage with bedroom 4
- Removed wall to family
- Mirrored rear
- Extended porch, living and bedroom 1
- Extended porch, living and bedroom 1 with increased walk-in-pantry
- Bedroom 5 in lieu of living with extended porch, bedroom 5 and bedroom


[More options available](#) [Speak to a New Home Consultant](#)

★ Popular Option

**Browse our Brochure Library**

Explore our full range of Floorplans, Facades & Inclusions.

[View brochures](#)



## Fairhaven Homes