



Latrobe facade as shown on the Newport 361

BRIDGEWATER COLLECTION

# The Newport

24

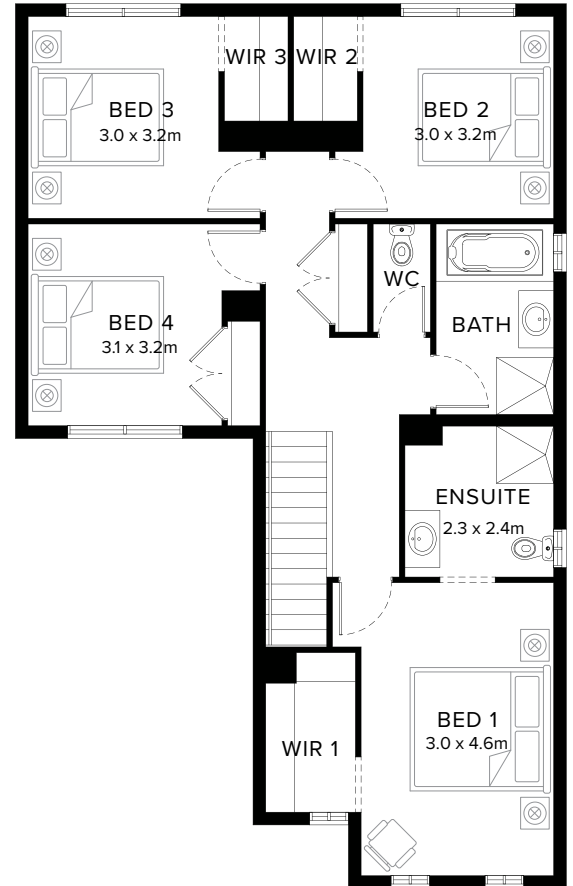
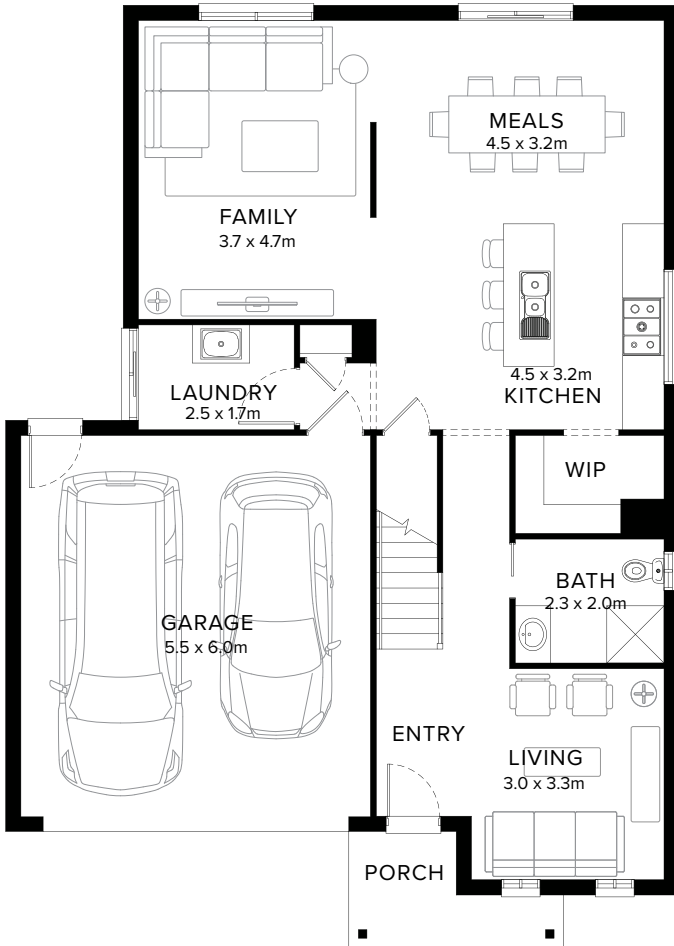
4  2  3  2 

## Contemporary Family Plan

The Newport is a flowing layout that appears modern and is suitable for most needs. Instantly as you enter, you are greeted with a bright and light space. All bedrooms are located upstairs, downstairs features a generous kitchen, meals and family space with optional covered outdoor area.

**Fairhaven Homes**

# Standard Floorplan



4 2 3 2

## Specifications

Ground Floor	First Floor	Garage	Porch*	House Total*	Facade
93.03m <sup>2</sup>	92.71m <sup>2</sup>	36.20m <sup>2</sup>	4.50m <sup>2</sup>	226.43m <sup>2</sup>	Parkway
10.01sq	9.98sq	3.90sq	0.48sq	24.37sq	

# Specifications & Options

## Suitable Facades

Apex	Greyson	Latrobe	Parkway	Ridge	Summit
Ashmond	Holbrook	Loddon	Patterson	Spire	Timbertop
Edge	Lancaster	Meridian	Pinnacle		

<b>House Width</b>	<b>House Depth</b>	<b>Block Width</b>	<b>Block Depth</b>
10.6m	14.8m	≥ 12.5m	≥ 22m

## Available Options

- ★ Columns in lieu of wall to family
- ★ Mirrored rear with removed wall to family
- ★ Covered outdoor area
- ★ Extended shower and vanity to ensuite
- ★ Theatre and covered outdoor area
- ★ Build over garage with bedroom 4
- Removed wall to family
- Mirrored rear
- Extended porch, living and bedroom 1
- Extended porch, living and bedroom 1 with increased walk-in-pantry
- Bedroom 5 in lieu of living with extended porch, bedroom 5 and bedroom

More options available


Speak to a New Home Consultant

★ Popular Option

**Browse our Brochure Library**

Explore our full range of Floorplans, Facades & Inclusions.

[View brochures](#)



## Fairhaven Homes