



BRIDGEWATER COLLECTION

The Newport

41

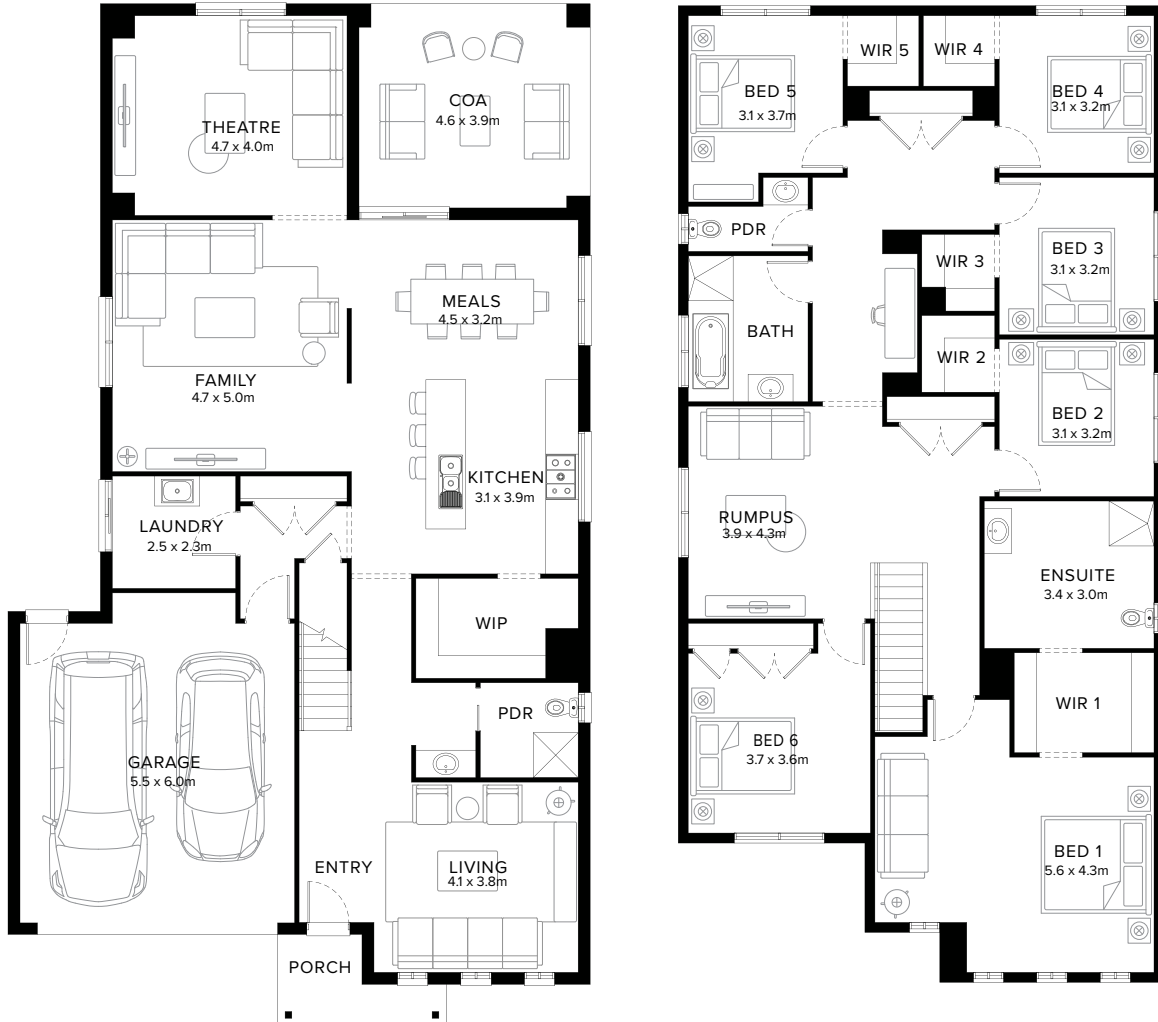
6  4  3  1  2  1 

Contemporary Family Plan

The Newport is a flowing layout that appears modern and is suitable for most needs. Instantly as you enter, you are greeted with a bright and light space. All bedrooms are located upstairs, downstairs features a generous kitchen, meals and family space with optional covered outdoor area.

Fairhaven Homes

Standard Floorplan



Specifications

| Ground Floor | First Floor | Garage | Porch* | C.O.A | House Total* | Facade |
|----------------------|----------------------|---------------------|--------------------|---------------------|----------------------|---------|
| 142.98m ² | 178.38m ² | 37.71m ² | 4.50m ² | 18.71m ² | 382.28m ² | Parkway |
| 15.39sq | 19.20sq | 4.06sq | 0.48sq | 2.01sq | 41.15sq | |

Specifications & Options

Suitable Facades

| | | | |
|---------|-----------|----------|-----------|
| Ashmond | Holbrook | Loddon | Ridge |
| Edge | Lancaster | Parkway | Summit |
| Greyson | Latrobe | Pinnacle | Timbertop |

| | | | |
|--------------------|--------------------|--------------------|--------------------|
| House Width | House Depth | Block Width | Block Depth |
| 11.6m | 20.5m | ≥ 14m | ≥ 28m |

Available Options

- ★ Mirrored rear
- ★ Extended shelving to walk-in-robe with extended shower, vanity and enclosed wc to ensuite
- ★ 5 bedroom in lieu of 6 with powder room and reconfigured alternate bathroom layout
- ★ 5 bedroom with ensuites and walk-in-robos
- ★ Bedroom 7 with ensuite in lieu of living
- Removed wall to family
- Columns in lieu of wall to family
- Extended cabinetry to laundry
- Increased laundry with linen cupboards
- Additional walk-in-robe to bedroom 1
- 5 bedroom with ensuites and walk-in-robos


[More options available](#) [Speak to a New Home Consultant](#)

★ Popular Option

Browse our Brochure Library

Explore our full range of Floorplans, Facades & Inclusions.

[View brochures](#)



Fairhaven Homes