




BRIDGEWATER COLLECTION

# The Newport

36

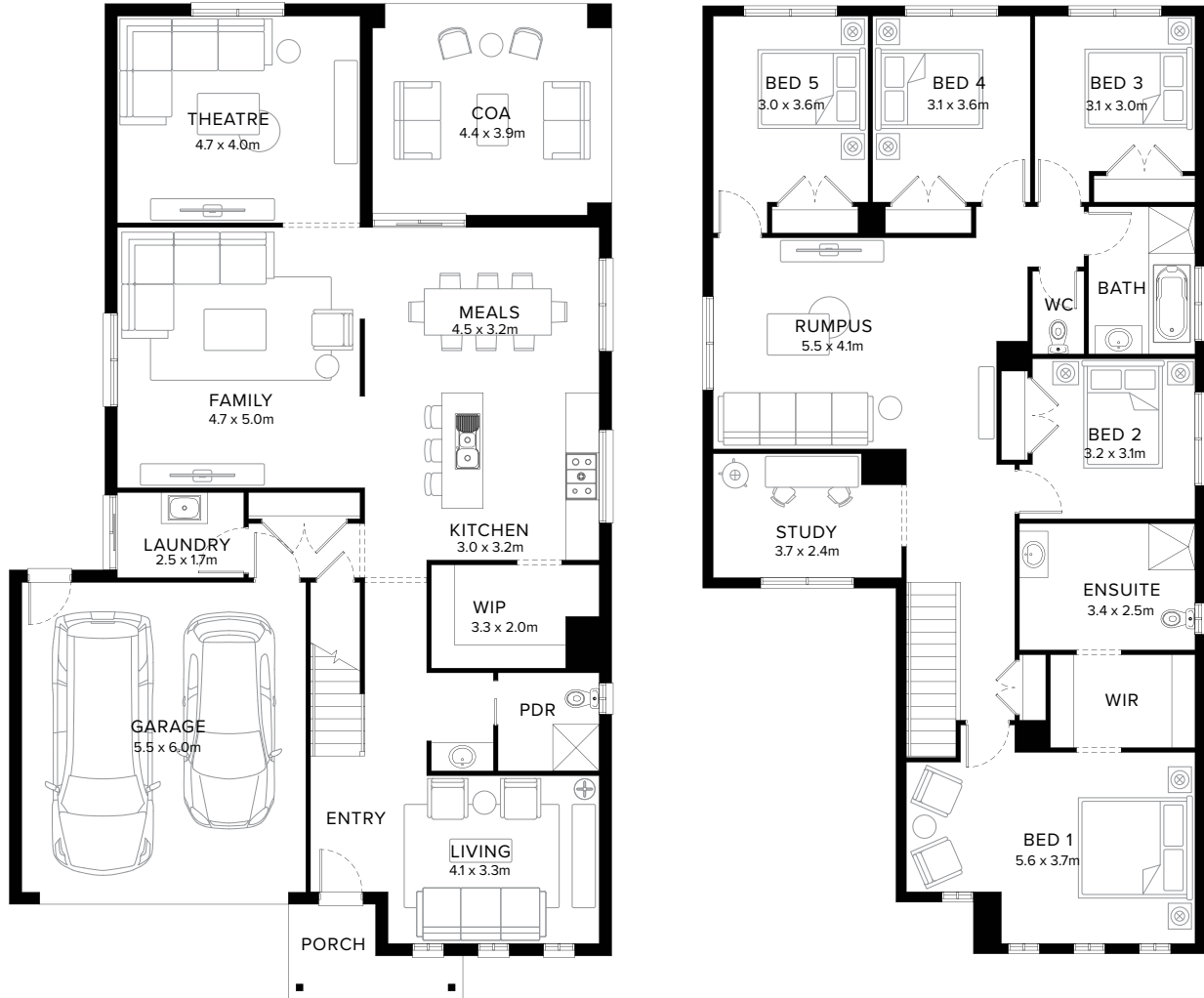
5  4  3  1  2  1 

## Contemporary Family Plan

The Newport is a flowing layout that appears modern and is suitable for most needs. Instantly as you enter, you are greeted with a bright and light space. All bedrooms are located upstairs, downstairs features a generous kitchen, meals and family space with optional covered outdoor area.

**Fairhaven Homes**

# Standard Floorplan



## Specifications

Ground Floor	First Floor	Garage	Porch*	C.O.A	House Total*	Facade
132.60m <sup>2</sup>	150.57m <sup>2</sup>	36.20m <sup>2</sup>	4.50m <sup>2</sup>	18.70m <sup>2</sup>	342.56m <sup>2</sup>	Parkway
14.27sq	16.21sq	3.90sq	0.48sq	2.01sq	36.87sq	

# Specifications & Options

## Suitable Facades

Ashmond	Holbrook	Loddon	Ridge
Edge	Lancaster	Parkway	Summit
Greyson	Latrobe	Pinnacle	Timbertop

<b>House Width</b>	<b>House Depth</b>	<b>Block Width</b>	<b>Block Depth</b>
11.6m	19.3m	≥ 14m	≥ 27m

## Available Options

- ★ Extended shower, vanity and enclosed wc to ensuite
- ★ Increased ensuite with extended shower, vanity and enclosed wc to bedroom 1
- ★ Build over garage with bedroom 6 and ensuite with extended vanity
- ★ 4 bedrooms in lieu of 5 with walk-in-robos and relocated rumpus
- Removed wall to family
- Extended cabinetry to laundry
- Cabinetry to walk-in-pantry in lieu of shelving
- Extended shelving to walk-in-robe
- Powder room in lieu of wc
- Reconfigured wc and bathroom layout
- Bedroom 6 in lieu of living with ensuite in lieu of powder room

More options available


Speak to a New Home Consultant

★ Popular Option

### Browse our Brochure Library

Explore our full range of Floorplans, Facades & Inclusions.

[View brochures](#)



## Fairhaven Homes