



Range facade as shown on the Merimbula 239

BRIDGEWATER COLLECTION

# The Merimbula

23

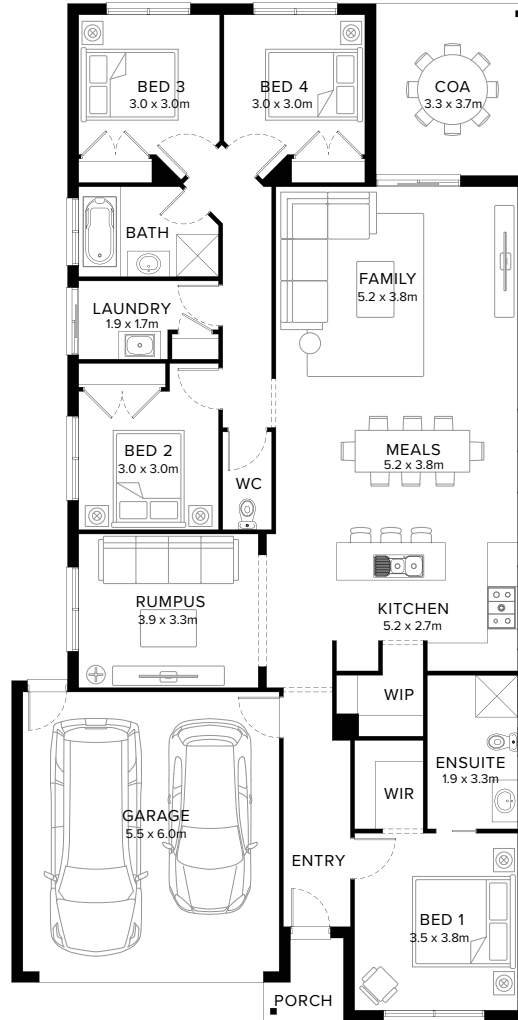
4  2  2  2  1 

## A Crowd Favourite

The Merimbula is a warm and inviting home that you'll be proud to show off. It's also a favourite among our clients, this four bedroom design encompasses all your desires and needs. The meticulously planned home incorporates multiple living spaces, two bathrooms, a covered outdoor area plus a double car garage.

**Fairhaven Homes**

# Standard Floorplan



4 2 2 2 1

## Specifications

Living	Garage	Porch*	C.O.A	House Total*	Facade
169.54m <sup>2</sup>	36.28m <sup>2</sup>	2.53m <sup>2</sup>	12.10m <sup>2</sup>	220.45m <sup>2</sup>	Harbour
18.25sq	3.90sq	0.27sq	1.30sq	23.73sq	

# Specifications & Options

## Suitable Facades

Botany	Eco	Matrix	Providence	Resort	Surf Coast
Canyon	Harbour	Peak	Range	Sierra	Tower
Dune	Haven	Pier	Ravine		

<b>House Width</b>	<b>House Depth</b>	<b>Block Width</b>	<b>Block Depth</b>
11.1m	21.8m	≥ 12.5m	≥ 30m

## Available Options

- ★ Mirrored front
- ★ Extended shower and vanity to ensuite
- ★ Extended cabinetry to laundry
- ★ Swap bedroom 2 and rumpus
- ★ Raked ceiling
- Extended cabinetry to laundry
- Alternate bathroom layout
- Alternate bathroom layout with extended shower
- 3 bedroom in lieu of 4 with extended covered outdoor area

[See an option you like?](#) [Speak to a New Home Consultant](#)

★ Popular Option

**Browse our Brochure Library**

Explore our full range of Floorplans, Facades & Inclusions.

[View brochures](#)

## Fairhaven Homes