




Hudson facade as shown on the Mayfield 31

BRIDGEWATER COLLECTION

# The Mayfield

34

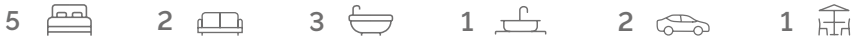
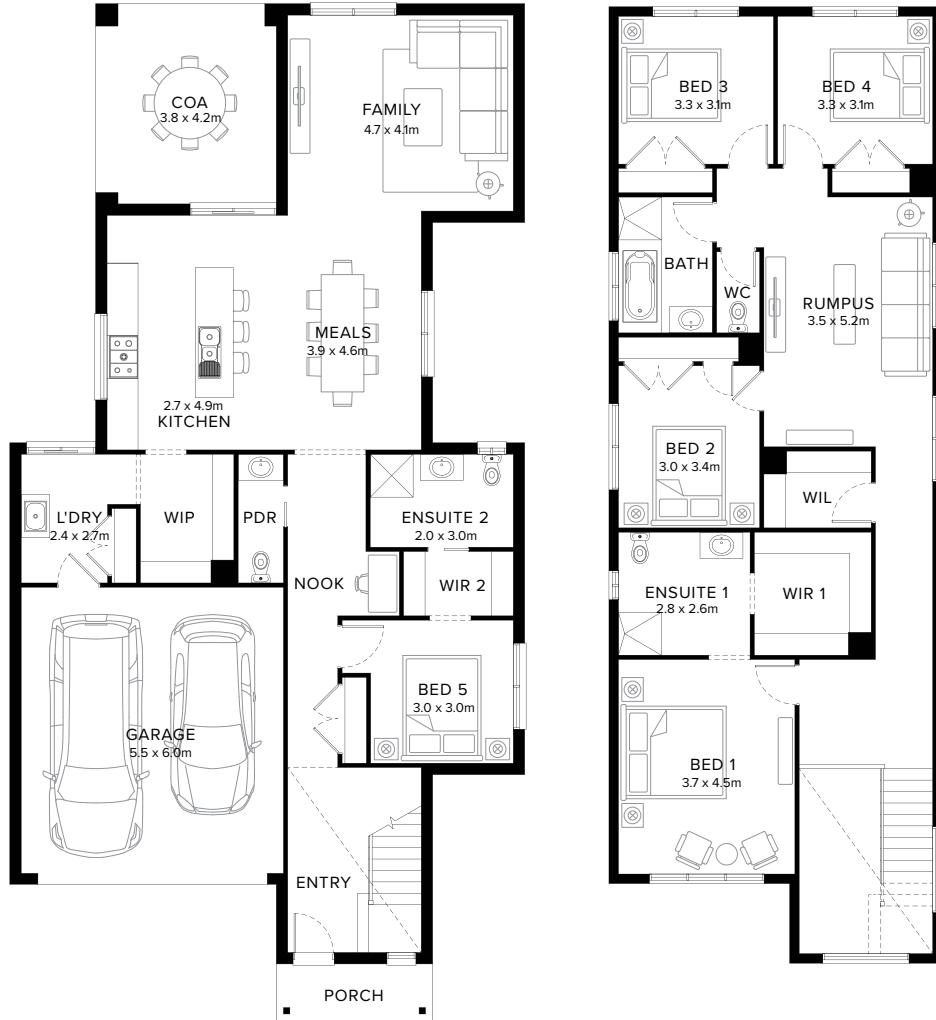
5  2  3  1  2  1 

## Inviting Modern Oasis

The Mayfield effortlessly captures attention with its stunning and stylish design, an ideal double storey floorplan. The ground floor hosts a family room, open plan kitchen, meals area, and a dedicated study, showcasing thoughtful design and flexibility for modern family living. The Mayfield ensures an accommodating, comfortable, and inviting atmosphere for every family member and guest.

**Fairhaven Homes**

# Standard Floorplan



## Specifications

Ground Floor	First Floor	Garage	Porch*	C.O.A	House Total*	Facade
123.57m <sup>2</sup>	133.89m <sup>2</sup>	35.76m <sup>2</sup>	3.94m <sup>2</sup>	15.69m <sup>2</sup>	312.85m <sup>2</sup>	Lincoln
13.30sq	14.41sq	3.85sq	0.42sq	1.69sq	33.68sq	

# Specifications & Options

## Suitable Facades

Hudson                      Madison  
 Lincoln                      Nixon

House Width	House Depth	Block Width	Block Depth
10.8m	21.3m	≥ 12.5m	≥ 28m

## Available Options

- ★ Extended shower to ensuite 2
- ★ Extended shower and vanity to ensuite
- ★ Living, powder room in lieu of bedroom 5
- ★ 3 bedrooms with ensuites and walk-in-robos in lieu of 4 bedrooms
- Extended cabinetry to laundry
- Cabinetry to walk-in-pantry in lieu of shelving
- Increased bedroom 5
- Increased ensuite 2 with extended shower and vanity
- 3 bedroom in lieu of 4, with walk-in-robos, powder room and relocated bathroom


[More options available](#)      [Speak to a New Home Consultant](#)

★ Popular Option

**Browse our Brochure Library**

Explore our full range of Floorplans, Facades & Inclusions.

[View brochures](#)



## Fairhaven Homes