



Nixon facade as shown on the Mayfield 334

BRIDGEWATER COLLECTION

The Mayfield

31

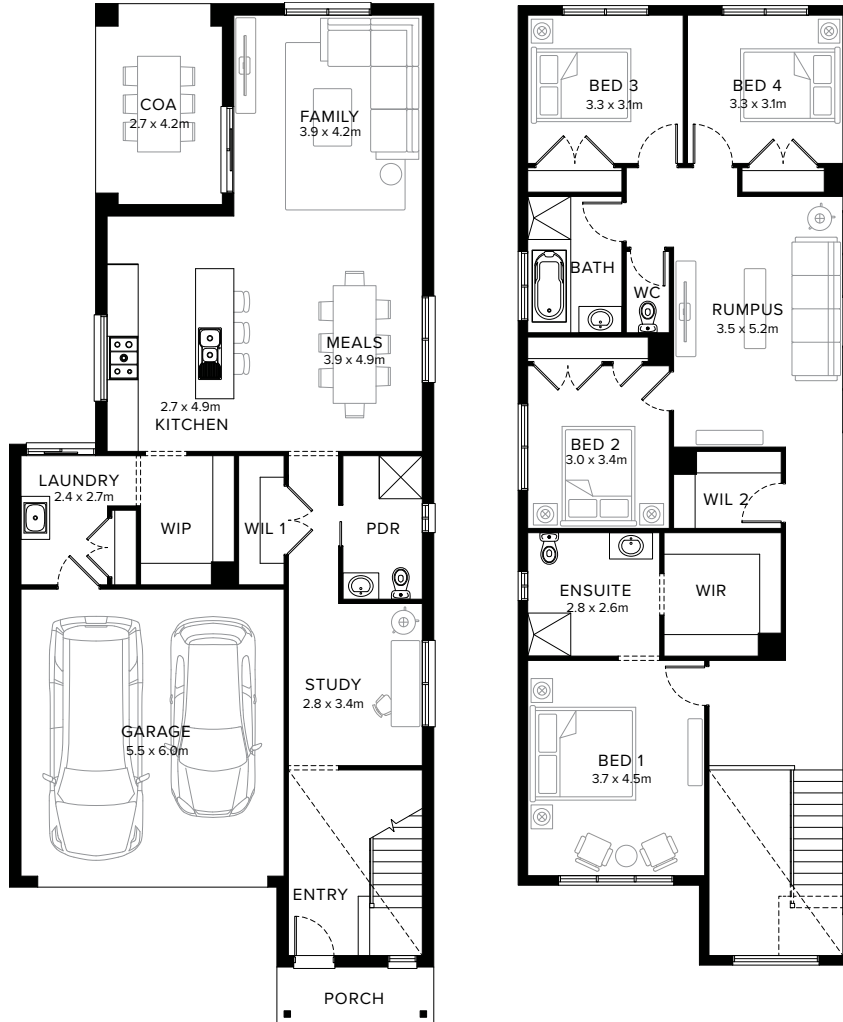
4  2  3  1  2  1 

Inviting Modern Oasis

The Mayfield effortlessly captures attention with its stunning and stylish design, an ideal double storey floorplan. The ground floor hosts a family room, open plan kitchen, meals area, and a dedicated study, showcasing thoughtful design and flexibility for modern family living. The Mayfield ensures an accommodating, comfortable, and inviting atmosphere for every family member and guest.

Fairhaven Homes

Standard Floorplan



Specifications

| Ground Floor | First Floor | Garage | Porch* | C.O.A | House Total* | Facade |
|----------------------|----------------------|---------------------|--------------------|---------------------|----------------------|---------|
| 106.06m ² | 133.89m ² | 35.76m ² | 3.94m ² | 10.90m ² | 290.55m ² | Lincoln |
| 11.42sq | 14.41sq | 3.85sq | 0.42sq | 1.17sq | 31.28sq | |

Specifications & Options

Suitable Facades

Hudson Madison
 Lincoln Nixon

| House Width | House Depth | Block Width | Block Depth |
|-------------|-------------|-------------|-------------|
| 8.8m | 21.3m | ≥ 10.5m | ≥ 28m |

Available Options

- ★ Cabinetry to walk-in-pantry in lieu of shelving
- ★ Extended shower and vanity to ensuite
- ★ Mirrored family and covered outdoor area
- ★ 3 bedrooms with ensuites and walk-in-robres in lieu of 4 bedrooms, extended shower and vanity to ensuites 2 and 3
- Extended cabinetry to laundry
- Extended shower to powder room
- Extended walk-in-pantry
- Extended walk-in-pantry with cabinetry in lieu of shelving
- 3 bedroom in lieu of 4, with walk-in-robres, powder room and relocated bathroom


[More options available](#) [Speak to a New Home Consultant](#)

★ Popular Option

Browse our Brochure Library

Explore our full range of Floorplans, Facades & Inclusions.

[View brochures](#)



Fairhaven Homes