



Pier facade as shown on the Byron 277

BRIDGEWATER COLLECTION

# The Byron

27

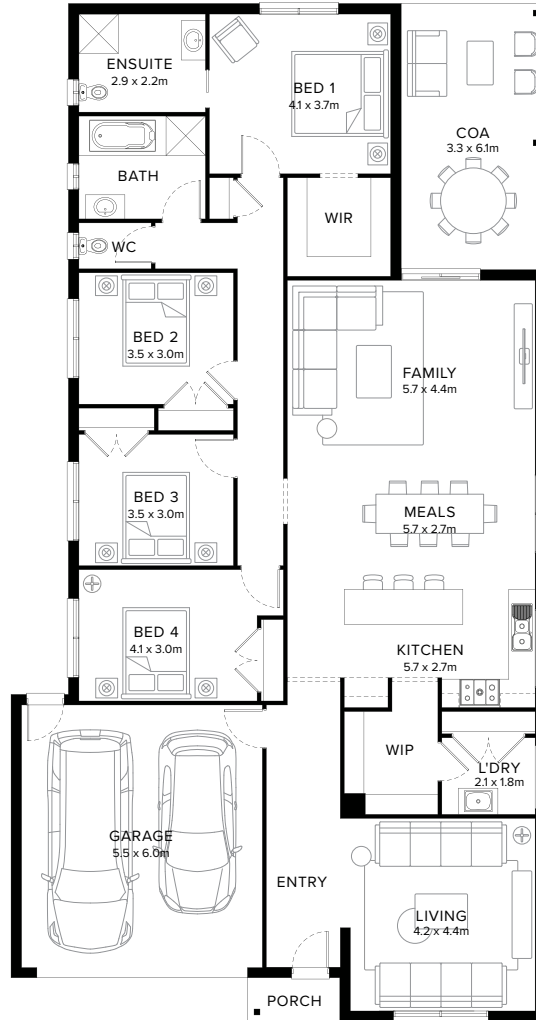
4  2  2  2  1 

## Smart, Charming Space

Crafted for charming living, the Bryon showcases at least three bedroom expansive open plan design. The highlight of the home is the spacious kitchen, seamlessly integrated with walk-in-pantry, meals and family area. The main bedroom located to the rear of the home, adds a touch of luxury and privacy. Perfect for those who appreciate the benefits of a well-designed home.

**Fairhaven Homes**

# Standard Floorplan



## Specifications

Living	Garage	Porch*	C.O.A	House Total*	Facade
199.56m <sup>2</sup>	36.07m <sup>2</sup>	2.11m <sup>2</sup>	20.06m <sup>2</sup>	257.81m <sup>2</sup>	Harbour
21.48sq	3.88sq	0.23sq	2.16sq	27.75sq	

# Specifications & Options

## Suitable Facades

Botany	Harbour	Peak	Ravine	Sierra	Tidal
Canyon	Haven	Pier	Regal	Sovereign	Tower
Dune	Loch	Providence	Resort	Surf Coast	
Eco	Matrix	Range	Scandi		

<b>House Width</b>	<b>House Depth</b>	<b>Block Width</b>	<b>Block Depth</b>
12.2m	23.3m	≥ 14m	≥ 32m

## Available Options

- ★ Alternate ensuite layout with extended shower and vanity
- ★ Powder Room in lieu of WC
- ★ Swap bathroom, wc with bedroom 2
- ★ Swap rumpus and bedroom 2 with added ensuite 2 and walk-in-robe, extended shower to ensuite 2
- ★ Raked ceiling
- Mirrored front with extended cabinetry to laundry
- Mirrored front with cabinetry to walk-in-pantry in lieu of shelving
- Alternate bathroom layout with extended 1700mm vanity
- Extended shower and vanity to ensuite
- Extended cabinetry to laundry

More options available

Speak to a New Home Consultant

★ Popular Option

**Browse our Brochure Library**

Explore our full range of Floorplans, Facades & Inclusions.

[View brochures](#)

## Fairhaven Homes