



Range facade as shown on the Byron 277

BRIDGEWATER COLLECTION

# The Byron

24

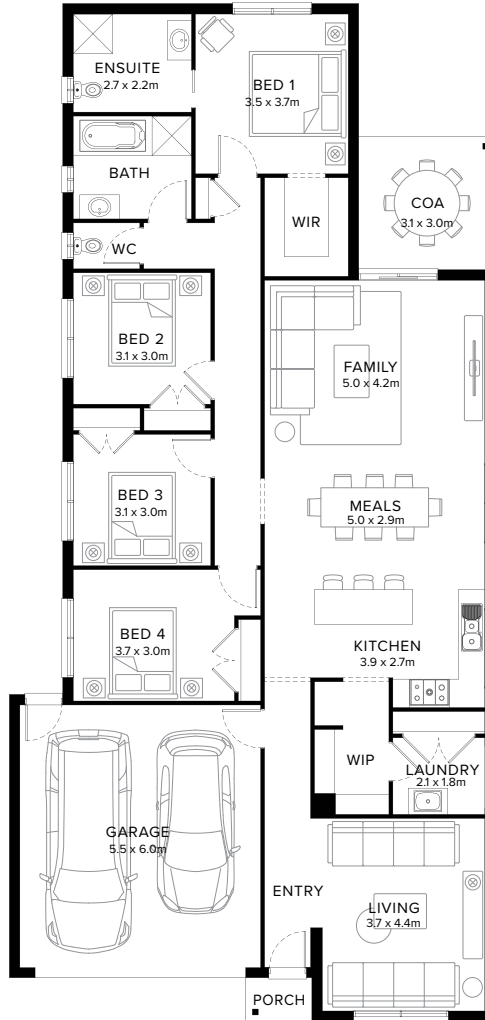
4  2  2  2  1 

## Smart, Charming Space

Crafted for charming living, the Bryon showcases at least three bedroom expansive open plan design. The highlight of the home is the spacious kitchen, seamlessly integrated with walk-in-pantry, meals and family area. The main bedroom located to the rear of the home, adds a touch of luxury and privacy. Perfect for those who appreciate the benefits of a well-designed home.

**Fairhaven Homes**

# Standard Floorplan



## Specifications

Living	Garage	Porch*	C.O.A	House Total*	Facade
176.89m <sup>2</sup>	36.05m <sup>2</sup>	1.51m <sup>2</sup>	9.48m <sup>2</sup>	223.94m <sup>2</sup>	Harbour
19.04sq	3.88sq	0.16sq	1.02sq	24.11sq	

# Specifications & Options

## Suitable Facades

Botany	Eco	Matrix	Providence	Resort	Surf Coast
Canyon	Harbour	Peak	Range	Sierra	Tower
Dune	Haven	Pier	Ravine		

House Width	House Depth	Block Width	Block Depth
11.1m	23.5m	≥ 12.5m	≥ 32m

## Available Options

- ★ Alternate bathroom layout
- ★ Alternate ensuite layout with extended shower and vanity
- ★ Swap bathroom, wc with bedroom 2
- ★ Swap bathroom and bedroom 2 with added ensuite 2, extended shower to ensuite 2
- ★ Raked ceiling
- ★ Mirrored front with extended cabinetry to laundry
- ★ Mirrored front with cabinetry to walk-in-pantry in lieu of shelving
- ★ Alternate bathroom layout with extended vanity
- ★ Extended shower and vanity to ensuite
- ★ Extended cabinetry to laundry
- ★ Cabinetry to walk-in-pantry in lieu of shelving

See an option you like?


Speak to a New Home Consultant

★ Popular Option

**Browse our Brochure Library**

Explore our full range of Floorplans, Facades & Inclusions.

[View brochures](#)



## Fairhaven Homes