



Sierra facade as shown on the Brooklyn 278

BRIDGEWATER COLLECTION

# The Brooklyn 27

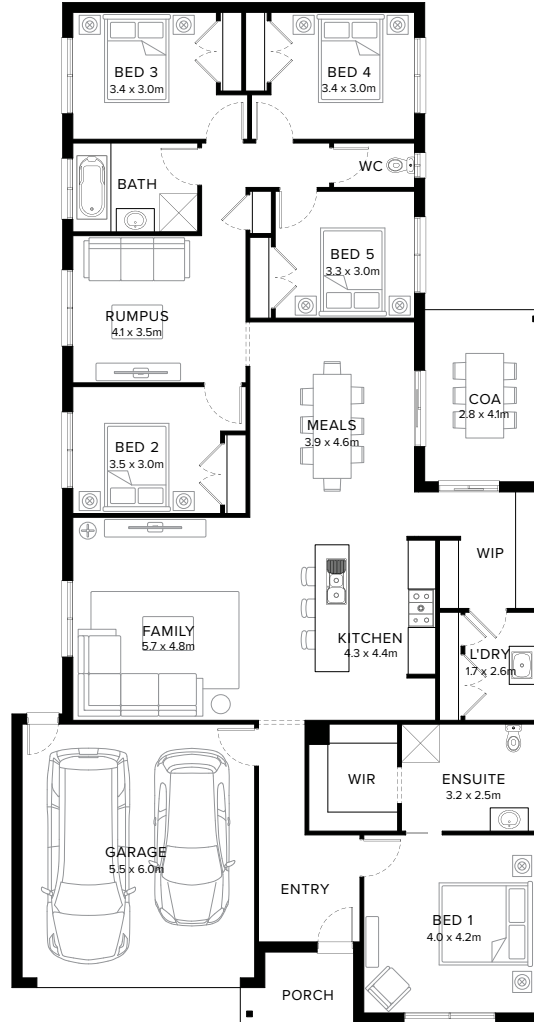
5  2  2  2  1 

## Captivating Functional Flow

Be prepared to be captivated by the Brooklyn, a five bedroom home that not only meets but exceeds expectations. Its flowing design effortlessly creates distinct zones and open spaces, offering the perfect blend of functionality and style. The kitchen is a culinary haven, complete with walk-in-pantry that connects to a walk-through laundry ensuring added privacy. The Brooklyn is the epitome of modern family living.

**Fairhaven Homes**

# Standard Floorplan



5 2 2 2 1

## Specifications

Living	Garage	Porch*	C.O.A	House Total*	Facade
206.96m <sup>2</sup>	36.25m <sup>2</sup>	4.02m <sup>2</sup>	11.56m <sup>2</sup>	258.79m <sup>2</sup>	Harbour
22.28sq	3.90sq	0.43sq	1.24sq	27.86sq	

# Specifications & Options

## Suitable Facades

Botany	Eco	Matrix	Providence	Resort	Surf Coast
Canyon	Harbour	Peak	Range	Sierra	Tower
Dune	Haven	Pier	Ravine		

<b>House Width</b>	<b>House Depth</b>	<b>Block Width</b>	<b>Block Depth</b>
12.6m	24.1m	≥ 14m	≥ 32m

## Available Options

- ★ Alternate bathroom layout with extended shower
- ★ Reconfigure laundry and walk-in-pantry layout
- ★ Extended shower, vanity and enclosed wc to ensuite
- ★ Swap rumpus and bedroom 5
- ★ Raked ceiling to kitchen and meals
- Mirrored front
- Alternate bathroom layout
- Cabinetry to walk-in-pantry in lieu of shelving
- Extended cabinetry to laundry
- Reconfigured ensuite with extended shower and vanity
- Extended covered outdoor area


[More options available](#) [Speak to a New Home Consultant](#)

★ Popular Option

**Browse our Brochure Library**

Explore our full range of Floorplans, Facades & Inclusions.

[View brochures](#)



## Fairhaven Homes