



Canyon facade as shown on the Ballina 250

BRIDGEWATER COLLECTION

# The Ballina

21

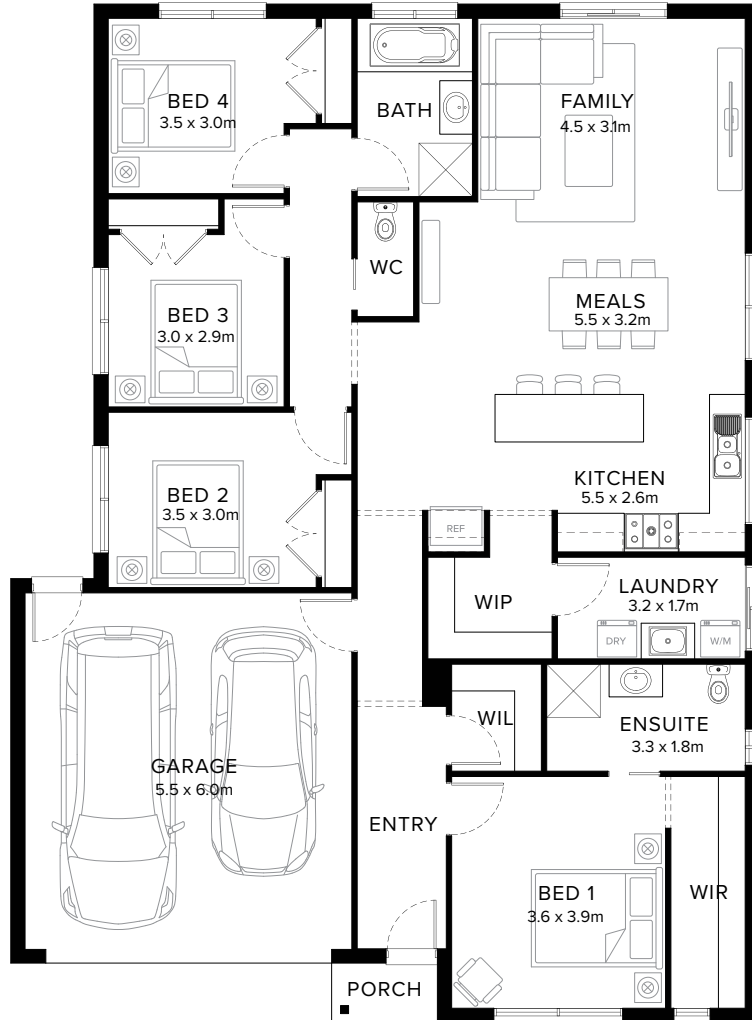
4  1  2  2 

## Flexible Family Classic

Blending character and comfort the Ballina is tailored for both first home buyers and families. This popular home design is characterised by its clever and modern layout, catering to diverse needs. The Ballina includes four generous bedrooms, with the main featuring an ensuite and walk-in-robe. The heart of the home is a sizeable open plan living area encompassing the kitchen, meals and family space.

**Fairhaven Homes**

# Standard Floorplan



4 1 2 2

## Specifications

Living	Garage	Porch*	House Total*	Facade
159.15m <sup>2</sup>	36.10m <sup>2</sup>	1.78m <sup>2</sup>	197.03m <sup>2</sup>	Harbour
17.13sq	3.89sq	0.19sq	21.21sq	

# Specifications & Options

## Suitable Facades

Botany	Harbour	Peak	Ravine	Sierra	Tidal
Canyon	Haven	Pier	Regal	Sovereign	Tower
Dune	Loch	Providence	Resort	Surf Coast	
Eco	Matrix	Range	Scandi		

<b>House Width</b>	<b>House Depth</b>	<b>Block Width</b>	<b>Block Depth</b>
12.6m	17.1m	≥ 14m	≥ 25m

## Available Options

- ★ Alternate bathroom layout with extended shower and vanity
- ★ Extended shower, vanity and enclosed wc to ensuite
- ★ Extended shower and 1700mm vanity to ensuite
- ★ Covered outdoor area
- ★ 3 bedrooms in lieu of 4, with rumpus
- Alternate bathroom layout
- Alternate bathroom layout with extended shower
- Extended cabinetry to laundry
- Cabinetry to walk-in-pantry in lieu of shelving
- Extended shower and 1200mm vanity to ensuite
- Alternate ensuite layout with bath, extended shower and 1700mm vanity

More options available


Speak to a New Home Consultant

★ Popular Option

**Browse our Brochure Library**

Explore our full range of Floorplans, Facades & Inclusions.

[View brochures](#)



## Fairhaven Homes