



Range facade as shown on the Ballina 250

BRIDGEWATER COLLECTION

# The Ballina

25

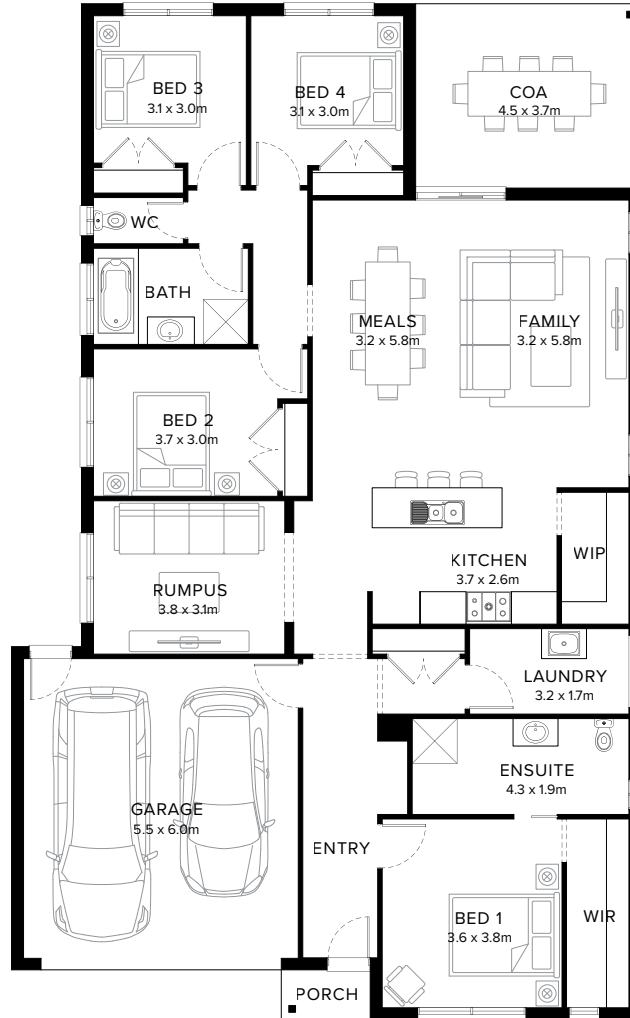
4  2  2  2  1 

## Flexible Family Classic

Blending character and comfort the Ballina is tailored for both first home buyers and families. This popular home design is characterised by its clever and modern layout, catering to diverse needs. The Ballina includes four generous bedrooms, with the main featuring an ensuite and walk-in-robe. The heart of the home is a sizeable open plan living area encompassing the kitchen, meals and family space.

**Fairhaven Homes**

# Standard Floorplan



## Specifications

Living	Garage	Porch*	C.O.A	House Total*	Facade
178.35m <sup>2</sup>	36.10m <sup>2</sup>	1.78m <sup>2</sup>	16.64m <sup>2</sup>	232.87m <sup>2</sup>	Harbour
19.20sq	3.89sq	0.19sq	1.79sq	25.07sq	

# Specifications & Options

## Suitable Facades

Botany	Eco	Matrix	Providence	Resort	Surf Coast
Canyon	Harbour	Peak	Range	Sierra	Tower
Dune	Haven	Pier	Ravine		

House Width	House Depth	Block Width	Block Depth
12.6m	20.3m	≥ 14m	≥ 28m

## Available Options

- ★ Reconfigured laundry and extended walk-in-pantry layout with cabinetry to walk-in-pantry
- ★ Extended shower, vanity and enclosed wc to ensuite
- ★ Extended meals and family with covered outdoor area
- ★ Bedroom 2 with ensuite and walk-in-robe in lieu of rumpus
- ★ Raked ceiling
- Reconfigured laundry and walk-in-pantry layout
- Extended shelving to walk-in-pantry
- Extended cabinetry to laundry
- Extended shower and vanity to ensuite
- Swap rumpus and bedroom 2

More options available

Speak to a New Home Consultant

★ Popular Option

### Browse our Brochure Library

Explore our full range of Floorplans, Facades & Inclusions.

[View brochures](#)



## Fairhaven Homes