

Display Homes

# Waterford Rise



BRIDGEWATER COLLECTION

---

The Ballina 250

The Shoal 265

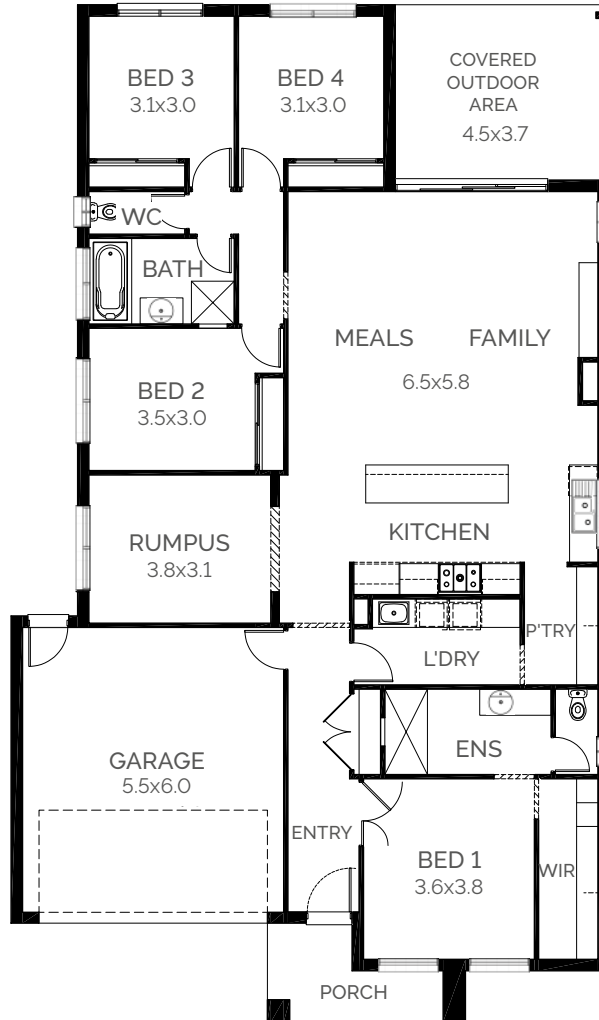
**Fairhaven Homes**

# The Ballina 250

As Displayed

! This displayed design is no longer available<sup>^</sup>

[See the new design on the next page >](#)



4 2 2 2 1

## Specifications

Living	Garage	Porch*	C.O.A	Total*
178.86m <sup>2</sup>	36.10m <sup>2</sup>	5.78m <sup>2</sup>	16.64m <sup>2</sup>	237.37m <sup>2</sup>
19.25sq	3.89sq	0.62sq	1.79sq	25.55sq

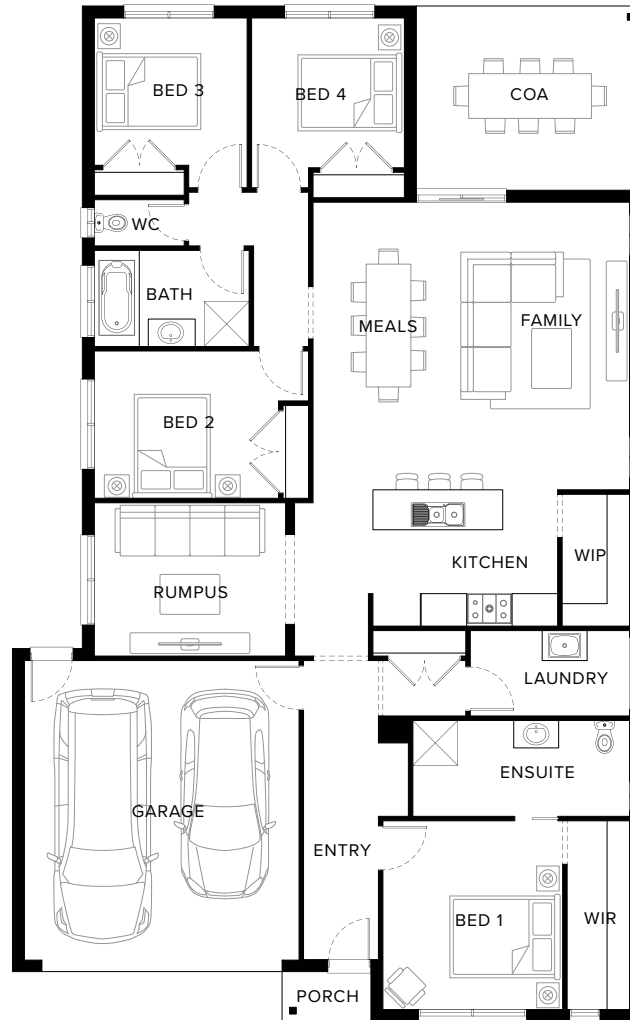
## Fairhaven Homes

<sup>^</sup>This display was built prior to the new National Construction Code changes effective May 1, 2024. The design is no longer compliant and cannot be built. We have revised this home with a code-compliant version of this plan, featuring improved accessibility and a 7-Star energy rating. Suggested block width and depth are a guide only. Actual front, rear and side setbacks vary based on developer, council and rescode requirements. © Copyright. Reproduction in any form either in whole or part is forbidden. Fairhaven Homes has the right to alter or improve this plan without notice. CDB-U 48497

# The Ballina 25

## Standard Floorplan

NEW



### Specifications

Living	Garage	Porch*	C.O.A	Total*
178.35m <sup>2</sup>	36.10m <sup>2</sup>	1.78m <sup>2</sup>	16.64m <sup>2</sup>	232.87m <sup>2</sup>
19.20sq	3.89sq	0.19sq	1.79sq	25.07sq

### Fairhaven Homes

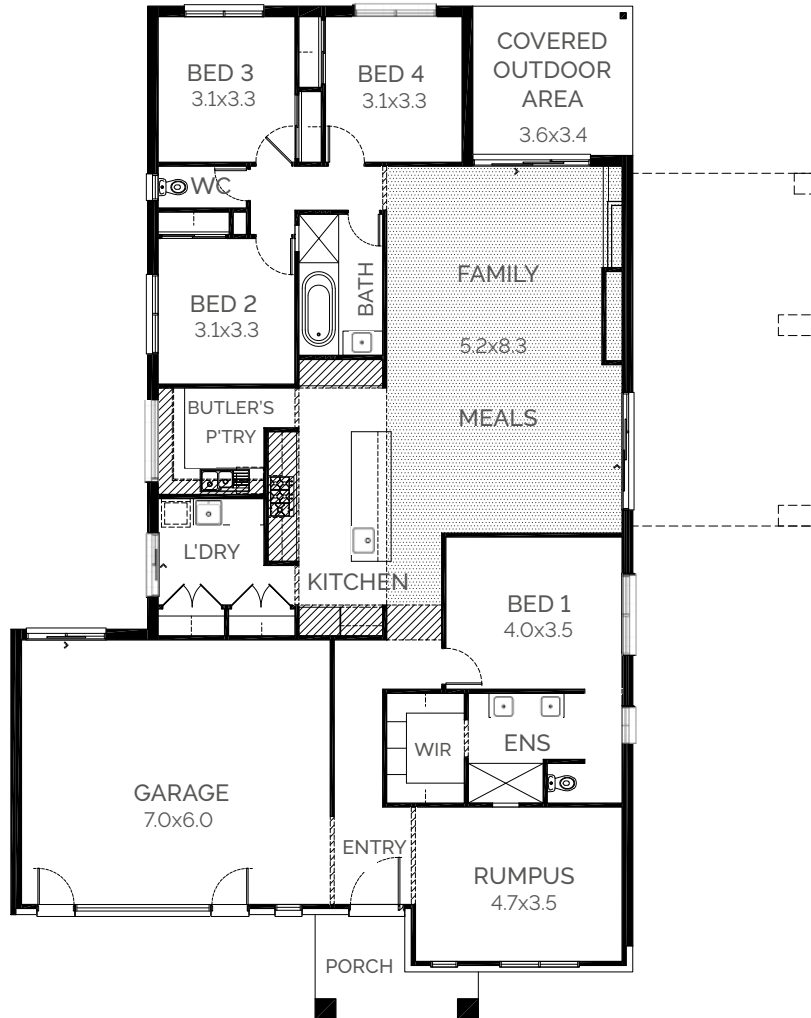
Suggested block width and depth are a guide only. Actual front, rear and side setbacks vary based on developer, council and rescode requirements. © Copyright. Reproduction in any form either in whole or part is forbidden. Fairhaven Homes has the right to alter or improve this plan without notice. CDB-U 48497

# The Shoal 265

As Displayed

⚠ This displayed design is no longer available<sup>^</sup>

[See the new design on the next page >](#)



4 2 2 2 1

## Specifications

Living	Garage	Porch*	C.O.A	Total*
195.22m <sup>2</sup>	45.85m <sup>2</sup>	6.63m <sup>2</sup>	12.31m <sup>2</sup>	260.01m <sup>2</sup>
21.01sq	4.94sq	0.71sq	1.32sq	27.99sq

## Fairhaven Homes

<sup>^</sup>This display was built prior to the new National Construction Code changes effective May 1, 2024. The design is no longer compliant and cannot be built. We have revised this home with a code-compliant version of this plan, featuring improved accessibility and a 7-Star energy rating. Suggested block width and depth are a guide only. Actual front, rear and side setbacks vary based on developer, council and rescode requirements. © Copyright. Reproduction in any form either in whole or part is forbidden. Fairhaven Homes has the right to alter or improve this plan without notice. CDB-U 48497

# The Shoal 26

## Standard Floorplan

NEW



4  2  2  2  1 

### Specifications

Living	Garage	Porch*	C.O.A	Total*
195.22m <sup>2</sup>	36.14m <sup>2</sup>	2.64m <sup>2</sup>	12.31m <sup>2</sup>	246.31m <sup>2</sup>
21.01sq	3.89sq	0.28sq	1.32sq	26.51sq

### Fairhaven Homes

Suggested block width and depth are a guide only. Actual front, rear and side setbacks vary based on developer, council and rescode requirements. © Copyright. Reproduction in any form either in whole or part is forbidden. Fairhaven Homes has the right to alter or improve this plan without notice. CDB-U 48497